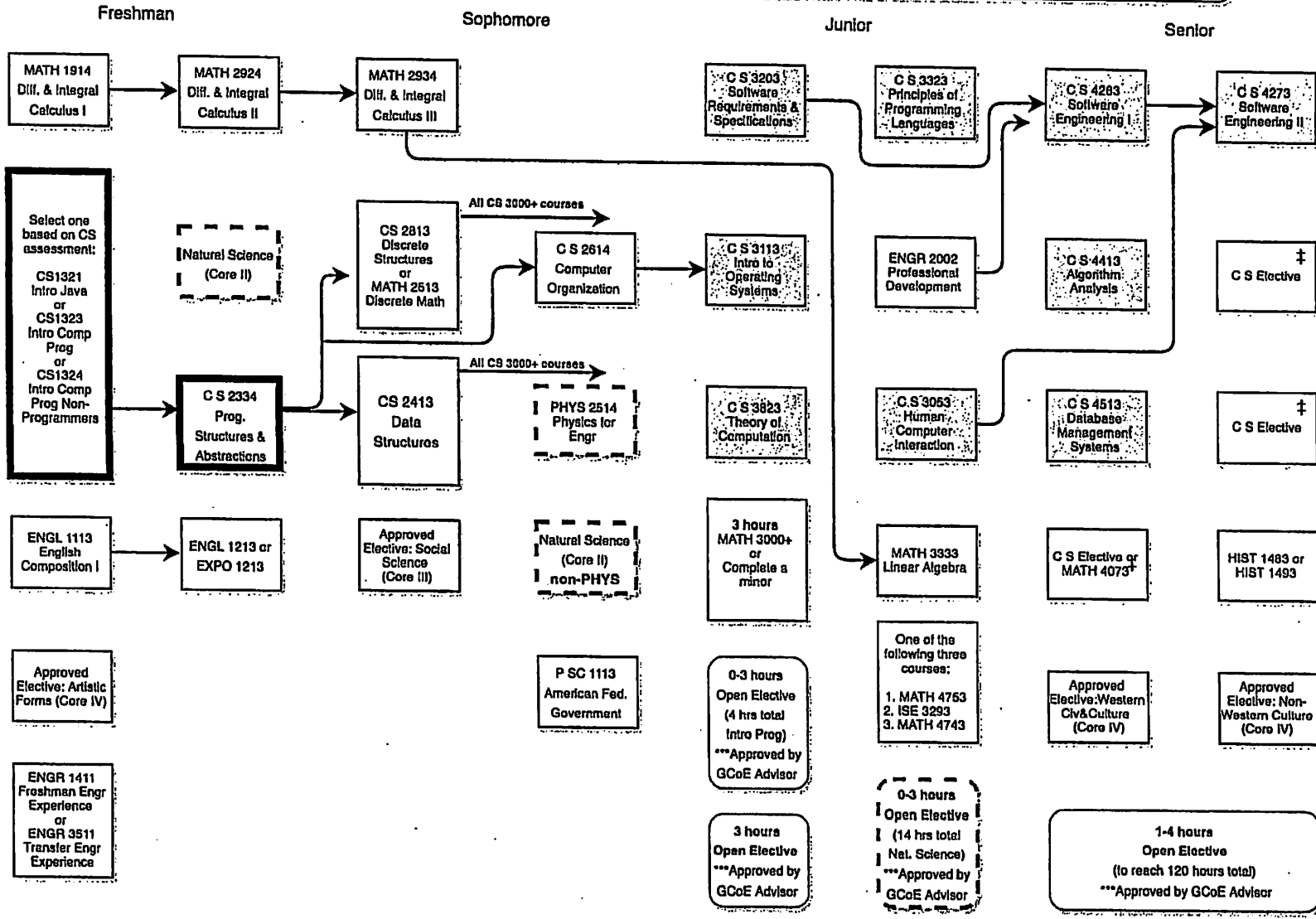


Name: _____ Sooner ID: _____ Date: _____ C S Advisor: _____

Bachelor of Science in Computer Science (B235)

Summer 2017 through Spring 2018 (120 credit hours)



- Additional Notes and Prerequisites:**
1. Prerequisite for CS 1323/1321/1324 = MATH1523 or concurrent enrollment in MATH1523 or higher
 2. Minimum B required in ONE of these courses to continue on with remaining CS courses.
 3. Prerequisite for all CS3000+ courses: CS 2813 and CS 2413
 4. You can complete MathMinor in your CS degree by completing:
 - A) MATH 2433 or 2934
 - B) MATH 2443 or 2834
 - C) MATH 3333
 - D) Choose MATH4073
 - E) Choose MATH4753 or MATH 4743
 5. Prerequisite for:
 - A) MATH 4763 = MATH 2924
 - B) ISE 3293 = MATH 2924
 - C) MATH 4743 = MATH 4733 (FA)
 6. Prerequisite for MATH 4073: MATH 3113 or 3413
 7. Prerequisite for MATH 2513: MATH 2423/2924
 9. Shaded CS courses offered ONCE a year (fall or spring only)
- ‡ To be chosen from CS 4000+ level (excluding CS4910 & 4970)
- Core II Natural Sciences requirement:
- A) Must include PHYS2514
 - B) 14 hours minimum
 - C) 2 courses from approved Natural Science list (one must be non-PHYS)
 - D) One must include a lab
- ***Open Electives must be approved by Gallogly College of Engineering Advisor (4-13 hours)

Natural Science Lab Foreign Language requirement met

3000-4000 level Gen. Ed. met <http://classnav.ou.edu> in GenEdType box

This flowchart is not an official check sheet of degree requirements. It is meant to be used as a supplemental visual guide to be used along with the official University of Oklahoma degree check sheet <http://checkshots.ou.edu/engrindx.htm>