



Meeting Reprecincting Deadlines in Oklahoma After an Unprecedented Census Year



Daniela Spade, Candace Johnston, and Kelby Thomasson

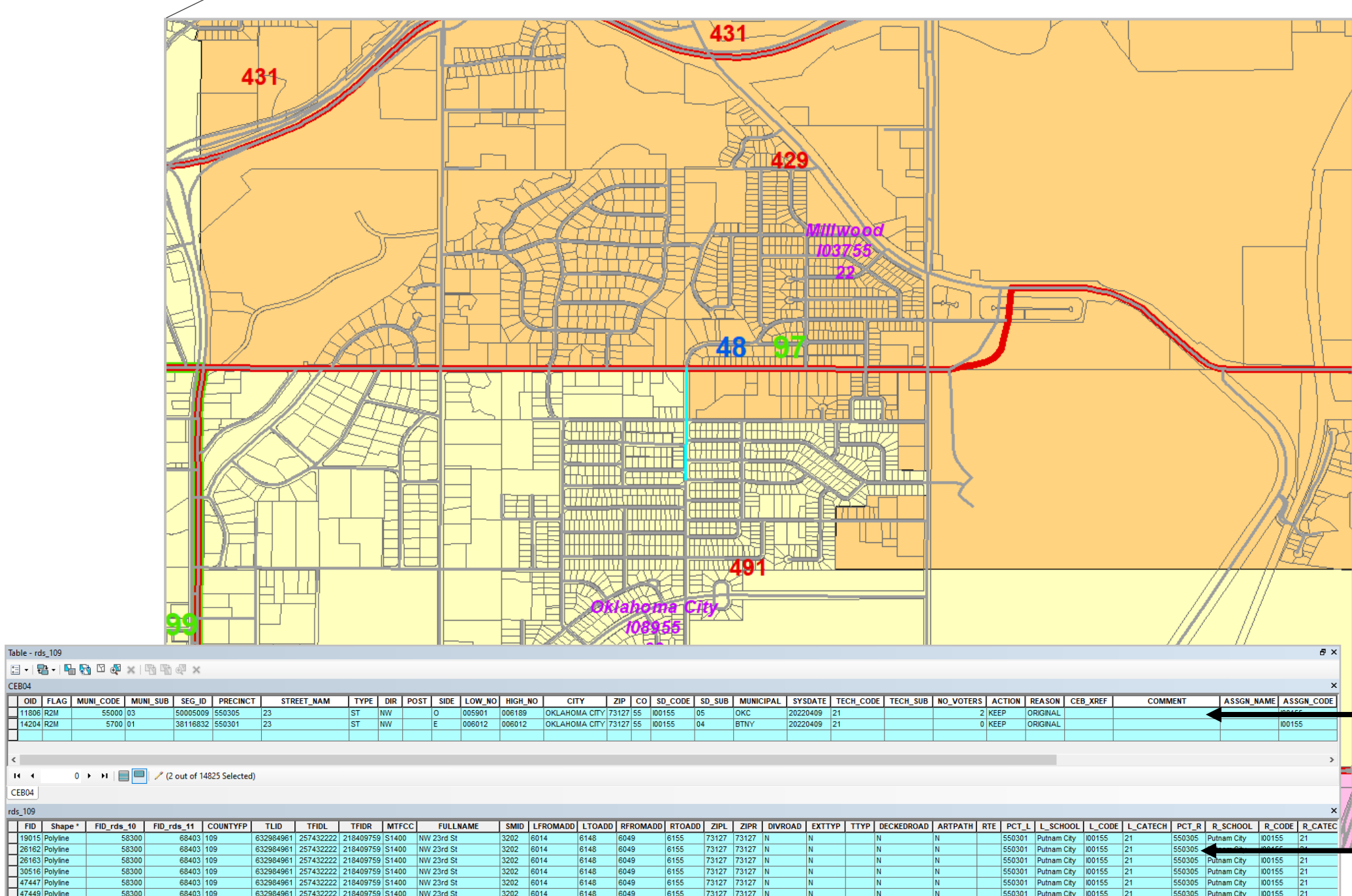
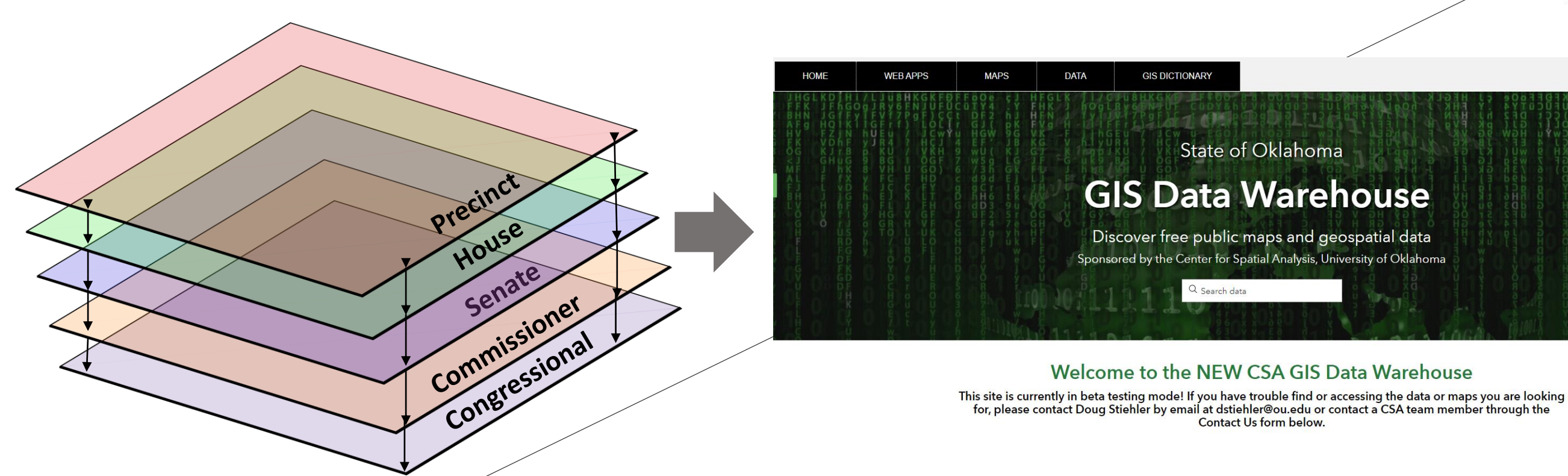
The University of Oklahoma College of Atmospheric and Geographic Sciences Center for Spatial Analysis

6. CSA Keeps the CEB's Street Guide Information Current

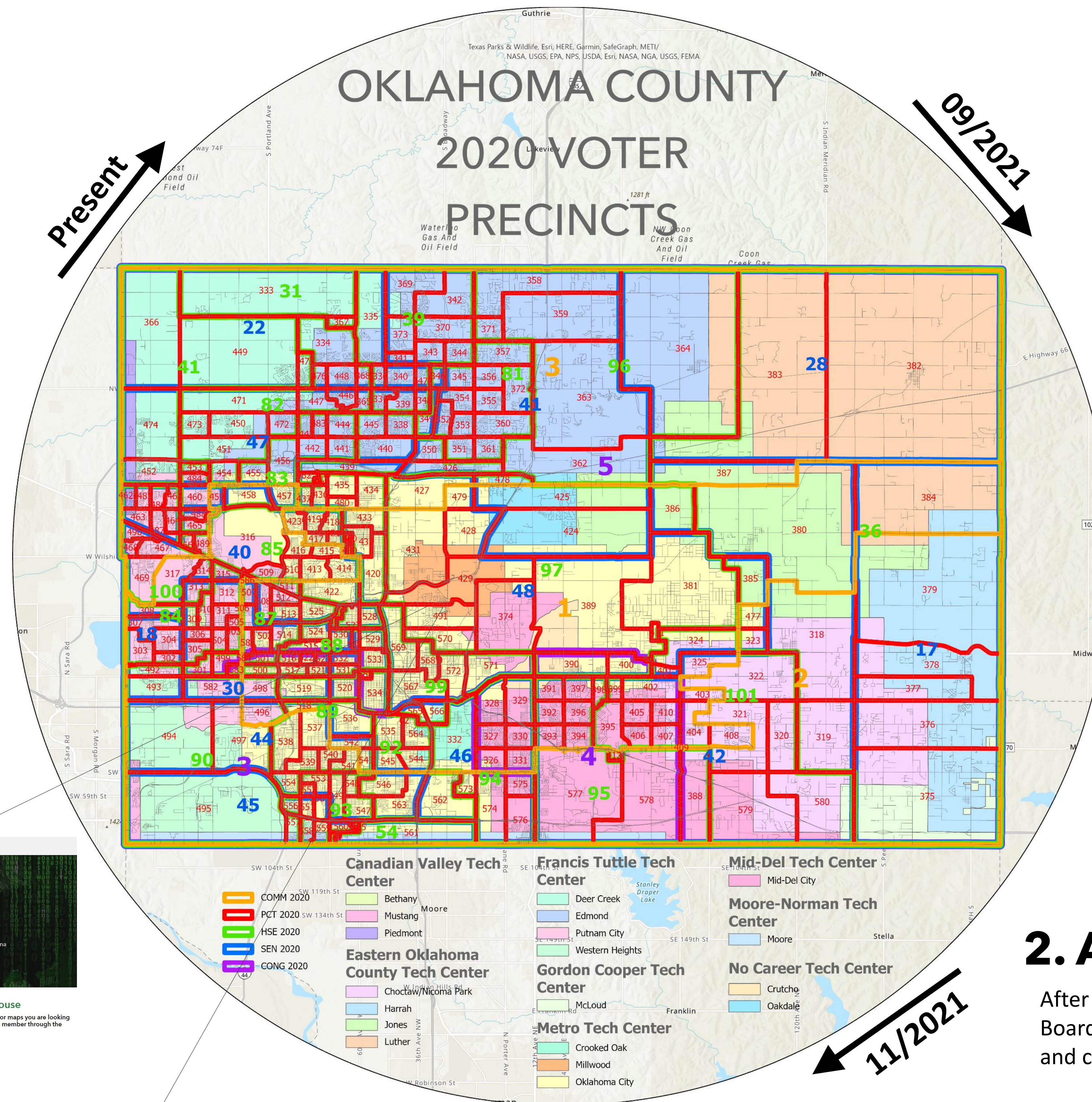
CSA has a long-standing contract for the OEB. This includes maintenance and updates for each county's STreet Guide based on street information from the U.S. Census Bureau (TIGER files), other authoritative address sources (e.g. E-911), and county-level parcel data. Each county also updates STreet Guide information. Every two months, CSA reconciles MESA STreet Guide data with those maintained in-house. For instances where addresses do not match and CSA cannot resolve the issue, screenshots are taken and sent to the county assessor, or the addresses are searched for on the county assessor's page. Typical examples include any new addresses or possible duplicate addressing caused by different spellings for the same street name, for instance.

5. Data Published to the State of Oklahoma Geospatial Data Warehouse

By April 2022, CSA had all legislative and precinct data published to the data warehouse in web map and pdf format. Spatial data will be available for download in May 2022.

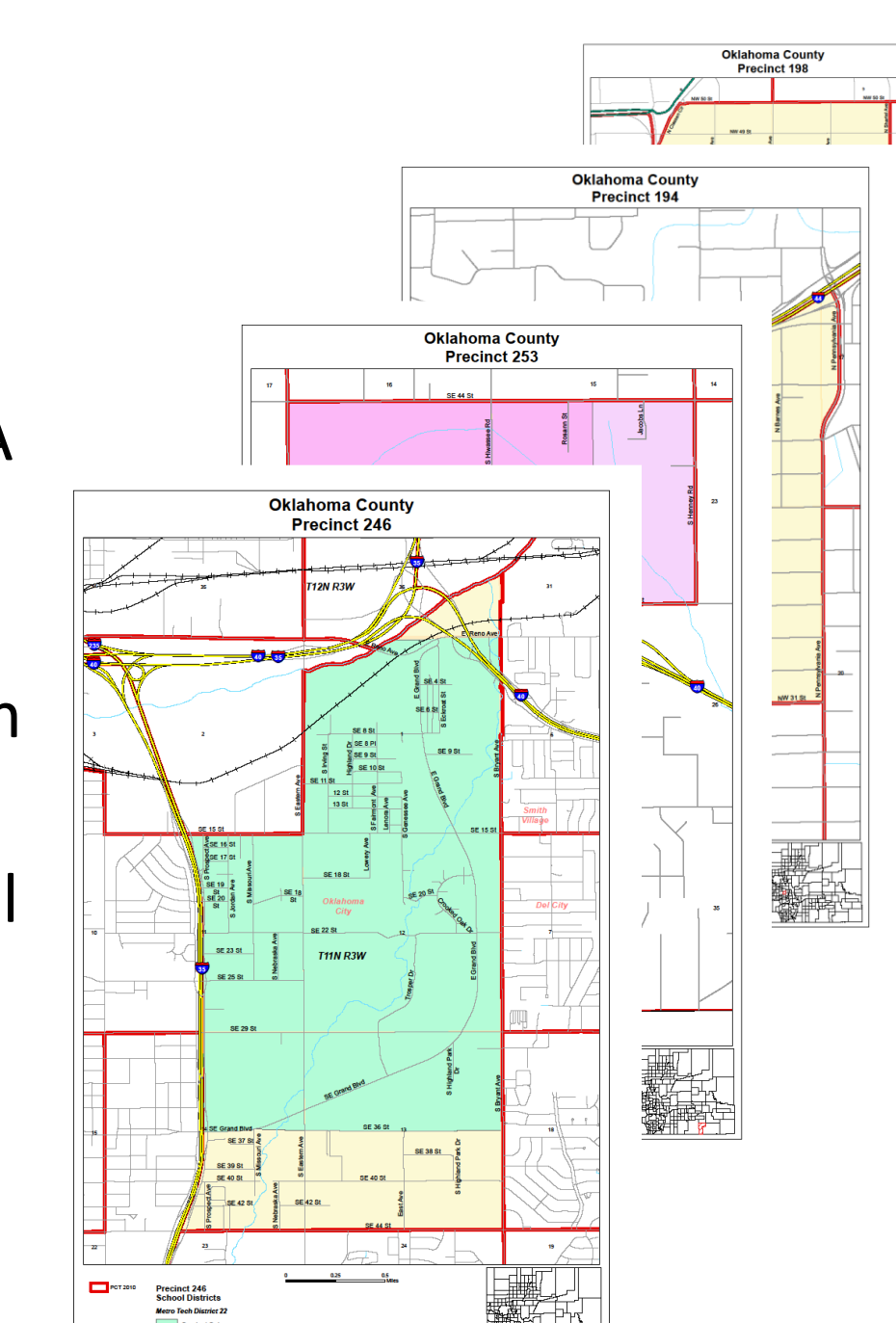


CEB records manually updated for each road segment to reflect precinct boundary changes.



4. Updating Street Guide Records

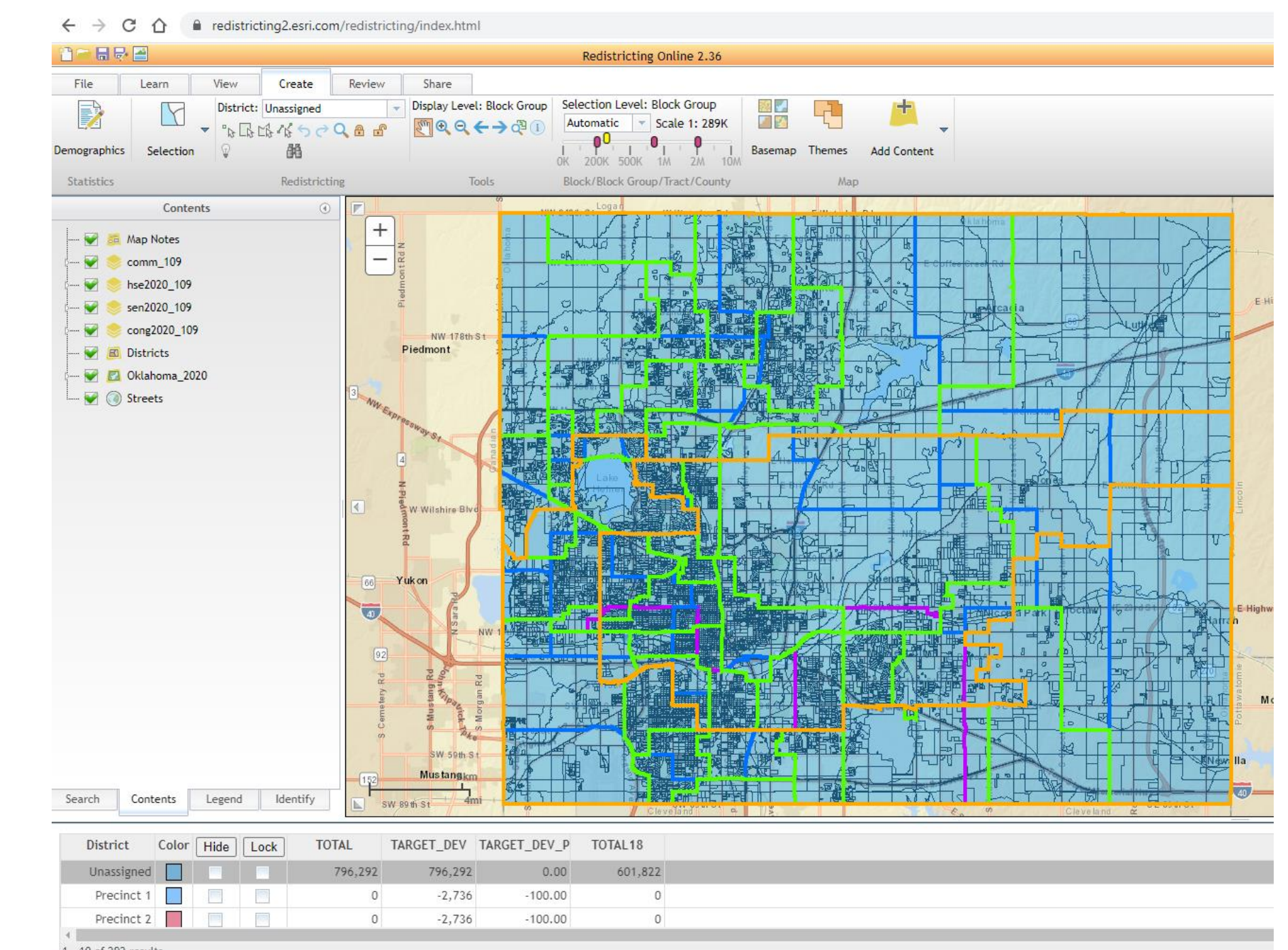
Each CEB utilizes a proprietary system, the Modern Election Support Application (MESA), to maintain and update voter rolls. The backbone to MESA is the STreet Guide, which contains all of the street segments and Geographic Location (GeoLoc or section, township, range (STR)) records for a county. After the reprecincting work was completed for each county, CSA immediately began updating that county's STreet Guide. Street information from the U.S. Census Bureau was combined with the updated precinct boundary information, school district boundaries, and municipal boundaries. Each **street segment** (highlighted in inset map) was matched to record(s) in the TIGER files and to the appropriate precinct, school district, and municipality and to municipal wards and school board member districts, when applicable. This task was completed by the original March 1, 2022 deadline.



1. Reprecincting 77 Counties in 3 Months

Oklahoma, unlike any other state, has a centralized system for reprecincting and maintaining the county election board records to account for precinct changes for all 77 of its counties. This task has been managed by the Center for Spatial Analysis (CSA) since 1996.

Delays in the release of the 2020 Census data pushed approval of the Oklahoma House, Senate, and commissioner boundaries back to November 2021, at which point CSA began meeting with each of the state's 77 county secretaries to redraw voter precinct boundaries. The **ESRI Redistricting online tool** was used, allowing each county secretary to create new boundary lines while visualizing Census blocks, polling locations, and the new House, Senate, and commissioner lines. The process of meeting with each county secretary took place from October through December 2021.



2. Approval by County Election Board

After the new precinct boundaries were approved by each County Election Board (CEB), digital and paper maps depicting the new precinct, legislative, and commissioner boundaries were provided to each county.

3. Creating Precinct Maps for Each County

When the reprecincting process is complete and boundaries have been approved by the CEB, CSA and the State Election Board provides to each CEB one large county map and individual 11"x17" precinct maps for each precinct in the county. In total, there were **1,984 precinct maps** created by CSA's graduate student interns using data driven pages. Depending on the precinct, most maps took between 10 to 30 minutes to complete. Each of the state's 77 counties has between 6 to 290 precincts. This task was also repeated for municipal boundaries. Precinct maps are available for download from the State of Oklahoma GIS Data Warehouse found at csa.ou.edu.