



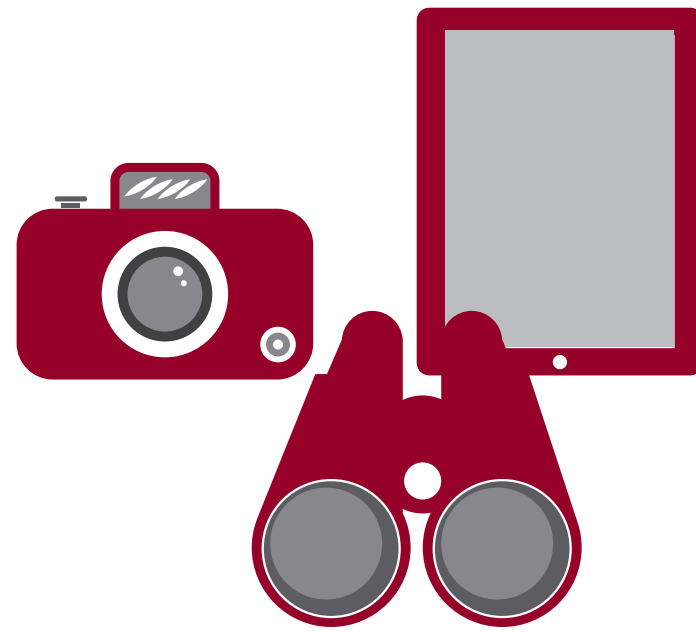
CEREMONIES CARRY-IN POLICY

ITEMS PERMITTED

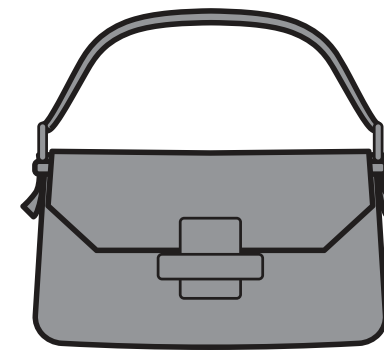


12" X 6" X 12"
CLEAR TOTE

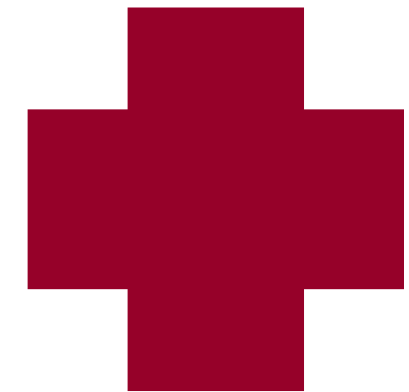
(ANYTHING LARGER IS PROHIBITED)



**BINOCULARS,
CAMERAS & TABLETS**



6.5" X 4.5"
SMALL CLUTCH PURSE

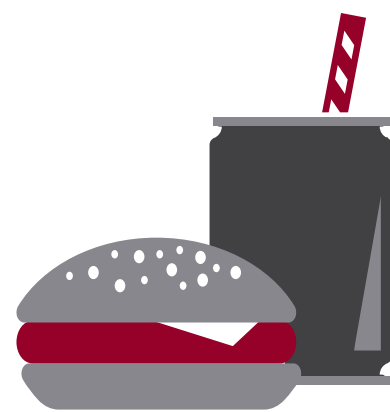


**ITEMS RELATED TO A
MEDICAL CONDITION**

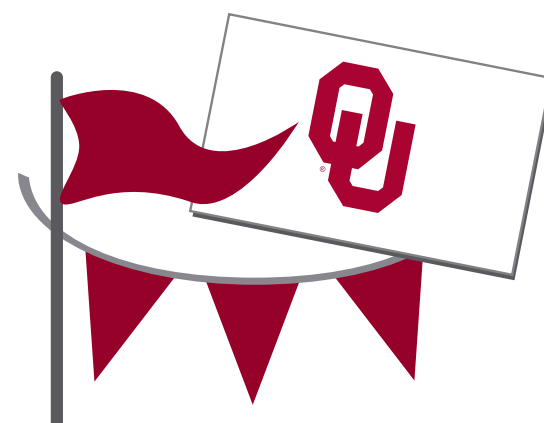
ITEMS PROHIBITED



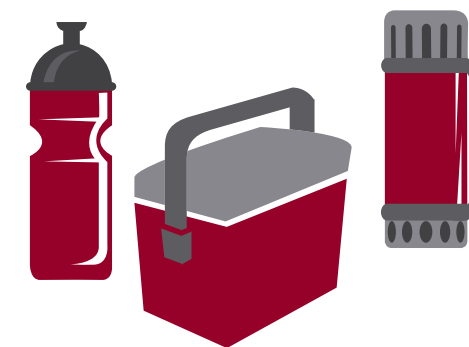
**PURSES, BACKPACKS,
DRAWSTRING BAGS, FANNY PACKS,
DIAPER BAGS & BINOCULAR CASES**



**FOOD OR BEVERAGES
(INCLUDING ALCOHOL)**



**FLAGS, SIGNS
OR BANNERS**



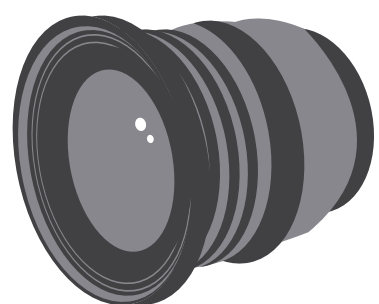
CONTAINERS



**STROLLERS
OR BABY CARRIERS**



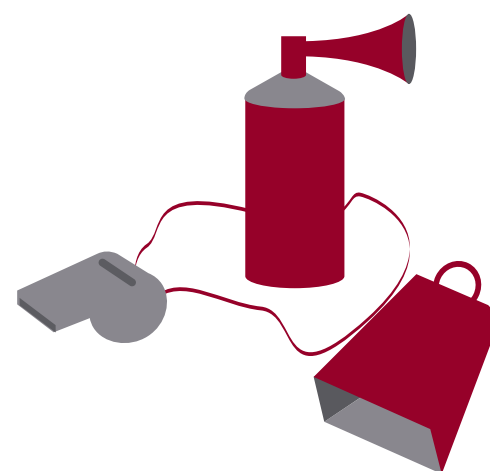
LAWN CHAIRS



**VIDEO CAMERAS OR
CAMERAS WITH LENSES
GREATER THAN 6"**



**CHAIRBACKS WITH
FRAMES & ARMRESTS
OR SEAT CUSHIONS**



NOISEMAKERS



WEAPONS



UMBRELLAS



INFLATABLES

ALL CARRIED ITEMS AND ENTRANTS ARE SUBJECT TO SEARCH. PROHIBITED ITEMS MUST BE RETURNED TO THE OWNER'S CAR OR DISCARDED. ANY UNLAWFUL ITEMS ARE SUBJECT TO CONFISCATION, AND THE PERSON IN POSSESSION OF SUCH ITEMS IS SUBJECT TO ARREST. ITEMS LEFT AT THE GATE WILL BE DISCARDED.