

OKLAHOMA PANHellenic



Recruitment Lookbook

Cayman's

LIVE WELL . DRESS WELL . SHOP WELL | EST. 1980



RECRUITMENT GIFT GUIDE

AGOLDE . BAREFOOT DREAMS . GOLDEN GOOSE . HAUTE SHORE . JOHN HARDY
JUDE FRANCES . LAURA MERCIER . MARC JACOBS . NAGHEDI NYC . RAG & BONE
REBECCA MINKOFF . SEA NY . STONEY CLOVER . TORY BURCH . ULLA JOHNSON

Cayman's | M - F 10 am - 5:30 pm, Saturday 10 am - 5 pm | 405.360.3969
2001 W. Main Norman, OK | shop-caymans.com | [@shopcaymans](https://www.instagram.com/shopcaymans)

TABLE OF CONTENTS

PAGE 2 WELCOME

PAGE 3 GREEK COUNCILS

PAGE 4 GOING GREEK AT OU

PAGE 5-6 WHO WE ARE

PAGE 7 PANHELLENIC EXEC BOARD

PAGE 8 HOW TO JOIN

PAGE 9-10 FIRST YEAR AT A GLANCE

PAGE 11-12 FINANCES

PAGE 13 RECRUITMENT TEAM

PAGE 14 REGISTRATION

PAGE 15-22 ATTIRE SUGGESTIONS

PAGE 23 SCHEDULE

PAGE 24 RECRUITMENT POLICIES

PAGE 25 RECOMMENDATION LETTERS

PAGE 26 HEALTH AND SAFETY

PAGE 27 TERMS TO KNOW

PAGE 28 PANHELLENIC FACILITIES MAP

PAGE 29-30 CONTINUOUS OPEN BIDDING

PAGE 31-32 FAQ

WELCOME



Welcome!

I am beyond thrilled that you have taken an interest in the Panhellenic Association. Here at OU, we have 11 amazing chapters who all bring something so unique and special to this campus. Our chapters are filled with exceptional, driven, and brilliant members. They are all a part of the larger Panhellenic community where bonds like no other are formed; this is something that is so special and unique to Panhellenic. No matter where you find your community, I am so glad that you have chosen to call OU your home and I am so excited for you to embark on the journey.

Sydney Smith
Panhellenic President

S
Y
D
N
E
Y

M
A
C
K
E
N
Z
I
E

Hi friends!

I am so excited for you to start your Panhellenic journey here at the University of Oklahoma. There are 11 amazing chapters here, and one of them will be your home away from home. The Panhellenic community is home to empowering, influential, intelligent, and loving women just like you!

The relationships built in the Panhellenic community with your sisters are long lasting and full of memories. Whatever life throws at you there are always people in your corner to celebrate and uplift you.

Mackenzie Tullier
VP Recruitment Operations



Hi guys!

I am so excited that you are interested in the Panhellenic Association. It has brought me so much joy and I hope it does for you too. At OU, we have 11 amazing chapters who each bring something new and creative to the Panhellenic community, and also exemplify the panhellenic ideals of scholarship, service, and career development.

The women of Panhellenic make a big difference on OU's campus, and that is seen around campus in every class and organization that you will encounter. Again, we are so excited to welcome you into the OU family and are appreciative that you are considering joining our team.

Steadfastly yours,
Heidi Young
VP Recruitment Programming

H
E
I
D
I

FRATERNITY & SORORITY COUNCILS

The University of Oklahoma is home to five Greek councils, each offering a unique experience in fraternity and sorority life. From social-interest organizations, to organizations centered around religion, culture, and even academic programs, there is a Greek experience for all students at the University of Oklahoma. Learn more on these pages about all the options for joining the fraternity and sorority community at OU. Visit us online at www.greek.ou.edu to learn more about our Greek councils.

Interfraternity Council

The Interfraternity Council is home to 16 fraternities. It is the second-largest council on campus with over 2,100 members and is comprised of social-interest organizations. To learn more about IFC, visit ifc.ou.edu.

Independent Greek Council

The Independent Greek Council is home to eight special-interest organizations, comprised of four fraternities and four sororities. With over 400 members, IGC is our newest council at OU, founded in 2015. To learn more, visit link.ou.edu/igc.

Multicultural Greek Council

The Multicultural Greek Council is comprised of 13 culturally-based organizations - seven sororities and six fraternities. MGC is home to over 300 members and is one of the largest and healthiest multicultural councils in the nation. Visit mgc.ou.edu to learn more.

National Pan-Hellenic Council

The National Pan-Hellenic Council is home to the "Divine Nine" historically Black fraternities and sororities. With nearly 100 members, NPHC is quickly growing. The University of Oklahoma is proud to be the only institution in the Big XII to host all nine NPHC charters. Learn more at link.ou.edu/nphc.

Panhellenic Association

The Panhellenic Association is the largest Greek council on campus with over 3,000 members in 11 chapters. Comprised of social-interest organizations, the Panhellenic Association is also the largest women's organization on campus. Visit pan.ou.edu to learn more.

IFC

IGC

MGC

NPHC

PAN

GOING GREEK

at the University of Oklahoma

INDEPENDENT GREEK COUNCIL

IGC is home to four sororities that serve various interest groups including STEM interest, Native interest, Christian interest, and music interest.

The recruitment process for the Independent Greek Council varies by chapter. Some chapters recruit semesterly, others recruit annually. Many IGC chapters recruit the first few weeks of each semester and hold a variety of events for those interested in joining their chapter to attend. Be sure to follow IGC on social media as well as consider following individual chapters you might be interested in to stay up to date with all current and upcoming recruitment events. Visit link.ou.edu/igc to see a full list of IGC organizations and learn more about the council.



For questions, contact Alene Basmajian,
IGC President
at alene.basmajian@ou.edu

IGC SORORITIES

Alpha Sigma Kappa (STEM interest)
Kappa Phi (Christian, service interest)
Sigma Alpha Iota (music interest)
Sigma Phi Lambda (Christian interest)

LEARN MORE AT LINK.OU.EDU/IGC

MULTICULTURAL GREEK COUNCIL

MGC is home to seven sororities that serve various interest groups including Asian interest, Latina interest, Native American interest and Multicultural interest.

MGC sororities will host two days of informationals, during the first two weeks of each semester - prospective members are required to attend at least one. MGC will host a showcase which highlights all of our organizations at the beginning of each Fall semester; however, prospective students are allowed to rush multiple semesters if needed. Each chapter also hosts individual rush events that all prospective members are welcomed to attend. We welcome everyone to explore their options as our goal is for students to find a home away from home through MGC.



For questions, contact Abraham Mendieta,
MGC President
at abrahammendieta@ou.edu

MGC SORORITIES

Alpha Kappa Delta Phi International Sorority, Inc.
Gamma Delta Pi Sorority, Inc.
Kappa Delta Chi Sorority, Inc.
Lambda Delta Psi Sorority, Inc.
Phi Delta Alpha Sorority, Inc.
Sigma Lambda Gamma National Sorority, Inc.
Theta Nu Xi Multicultural Sorority, Inc.

LEARN MORE AT MGC.OU.EDU

NATIONAL PAN-HELLENIC COUNCIL

NPHC is home to four sororities, each part of the "Divine Nine." National Pan-Hellenic Council organizations are historically Black Greek-lettered organizations.

The National Pan-Hellenic Council does not have a formal recruitment process. However, each chapter does hold individual rush and intake meetings or informationals at their own discretion. Typically, flyers or social media announcements will be posted in advance. Each organization has different, specific requirements for their applicants in order to become a candidate for membership. NPHC organizations are typically looking for students with an established collegiate GPA - meaning, first semester freshmen are not often eligible to join.



For questions, contact Makya Stell,
NPHC President
at makyastell@ou.edu

NPHC SORORITIES

Alpha Kappa Alpha Sorority, Inc.
Delta Sigma Theta Sorority, Inc.
Zeta Phi Beta Sorority, Inc.
Sigma Gamma Rho Sorority, Inc.

LEARN MORE AT LINK.OU.EDU/NPHC

WHO WE ARE

our Values

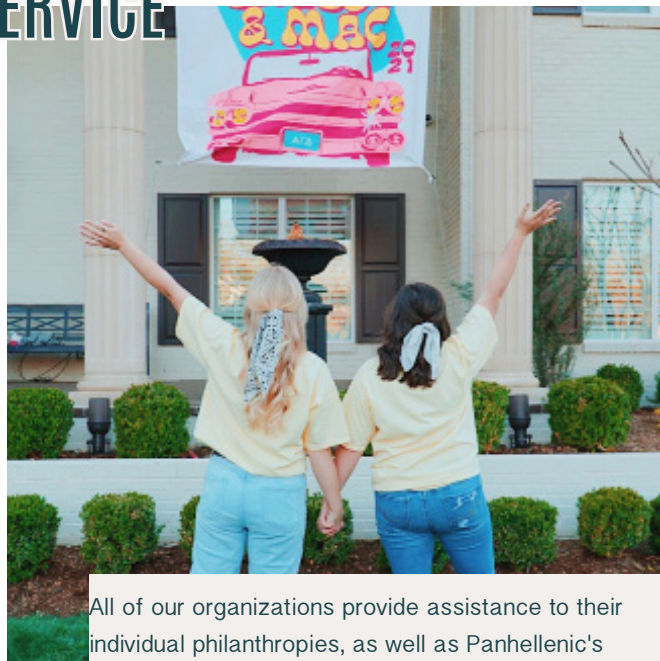
The Panhellenic Association has been the center for women's leadership and service on campus since 1909. The council serves as the coordinating body of the 11 National Panhellenic Conference affiliated sororities on campus and promotes our four core values in all we do - scholarship, service, leadership, and sisterhood.

SCHOLARSHIP



Our council provides academic mentoring, tutoring, time management seminars, study halls, and information on free campus resources

SERVICE



All of our organizations provide assistance to their individual philanthropies, as well as Panhellenic's philanthropy, the United Way of Norman.

LEADERSHIP



The fraternity and sorority experience is a direct springboard into campus engagement, Panhellenic membership provides multiple opportunities to help members grow as leaders.

SISTERHOOD



Joining a Panhellenic organization means having over 3,000 women on your team. Sororities offer new friends, lifelong bonds, and invaluable experiences.

WHO WE ARE

by the numbers

The University of Oklahoma Panhellenic Association is a vibrant community filled with scholars, leaders, and engaged citizens. We pride ourselves on bringing excellence to our community each day. Take some time to learn about our community of sorority members.

people



3,206 total members
11 Panhellenic Chapters



< 1%
International Students

57%
Out of State



42%
From Oklahoma

academics



3.51 GPA
All-Panhellenic GPA compared to the All-Women's GPA of a 3.41



436
Panhellenic members pursuing more than one degree

service



80,000+
Community service hours completed in 2020



\$500,000+
Philanthropic funds raised in 2020



1,100+
Leadership positions held on campus in 2020

PANHellenic CREED

We, as undergraduate members of women's fraternities, stand for good scholarship, for guarding of good health, for maintenance of fine standards, and for serving, to the best of our ability, our college community. Cooperation for furthering fraternity life, in harmony with its best possibilities, is the ideal that shall guide our fraternity activities.

We, as fraternity women, stand for service through the development of character inspired by the close contact and deep friendships of individual fraternity and Panhellenic life. The opportunity for wide and wise human contact, through mutual respect and helpfulness is the tenet by which we strive to live.

PANHellenic

Executive Board

The Panhellenic Association at the University of Oklahoma is a student-led organization, with current students comprising our executive council team. These students are elected in November and serve a full term from January - December. Each Panhellenic Executive Team member is a sorority member at the University of Oklahoma in good standing with their chapter.

During Formal Recruitment, these student leaders will be in the Panhellenic Headquarters Office located near the residence halls. The Panhellenic Executive Team will serve as Panhellenic staff in the summer and are happy to provide assistance or answer questions you might have about Formal Recruitment, Continuous Open Bidding, or general Panhellenic information.



Top row, left to right: Maddy Young VP Judicial Affairs, Bella Zaidle VP Public Affairs, Lauren Lancaster VP Admin Affairs, Heidi Young VP Recruitment Programming
Bottom row, left to right: Sloane Kennedy VP Programming, Allie Novotny VP Philanthropy, Sydney Smith President, Whitleigh Simmons VP Finance, Mackenzie Tullier VP Recruitment Operations, Jolie Morgan VP Inclusivity

HOW TO JOIN

our community

The Panhellenic Association at the University of Oklahoma is proud to offer multiple ways for students to become members of Panhellenic organizations. While this booklet does focus on Formal Recruitment, many students in our community have joined their organizations through Panhellenic's Informal Recruitment process.

Learn more about how to become a Panhellenic member below:

FORMAL RECRUITMENT

The process by which most Panhellenic members join their organizations. Formal Recruitment begins several days before classes begin in the fall term.

This process is formalized. Potential New Members receive party schedules from the Panhellenic staff each morning during the process.

Formal Recruitment is also referred to as "Fall Formal Recruitment" or "Primary Recruitment."
Formal Recruitment only occurs in the fall term.

During Formal Recruitment, chapters are allowed to recruit up to quota, or the number of potential new members (determined at the end of recruitment) that each chapter is allowed to pledge regardless of a chapter's total membership number.

All 11 Panhellenic organizations participate in Formal Recruitment.

INFORMAL RECRUITMENT

Fewer students join our community through Informal Recruitment (50-80 each term) than Formal Recruitment (900-1000 in the fall term).

This process is informal in nature. Chapters drive the process and invite students to recruitment events independent from Panhellenic.

Informal Recruitment is also referred to as "Continuous Open Bidding," or COB. Sometimes called "Spring Recruitment." Informal Recruitment occurs in the fall and spring semesters.

During Informal Recruitment, only chapters that have not pledged to campus total are eligible to participate. Total is automatically reset within 72 hours following primary, or Fall Formal Recruitment.

Only chapters that are below campus total can participate in Informal Recruitment.



There is no one correct way to join a Panhellenic organization. Our team encourages you to find the recruitment process that best suits your personality and your circumstance. If you have additional questions or want to talk about your options, please reach out to us at panhellenic@ou.edu or by calling (405) 325-3163.

YOUR FIRST YEAR

at a glance

The University of Oklahoma Panhellenic Association strives to make every year of the sorority experience a great one. However, we recognize the first year can be the most exciting and influential of all.

The new member experience may vary slightly between organizations, but we wanted to share a few things that you can expect in your first year as a Panhellenic member.

Study Hours

Some chapters require a certain number of study hall hours to be completed during the week. Sororities also implement a number of educational programs to assist new members in the academic transition into college.

New Member Education

As a new member, you will be required to attend weekly new member meetings in addition to weekly chapter meetings. The goals of these meetings is to teach new members the values, traditions, and rituals of the organization.

Philanthropic Service

Each Greek chapter enjoys serving its local and national philanthropy and will host events each semester to raise awareness and donations for the cause. New members are invited to attend these events as a way to socialize within the community while supporting a worthy cause.

Community Involvement

As a new member, you will be encouraged to participate in campus and Greek-wide events such as The Big Event, Soonerton, and Homecoming. These events are not only fun, but provide an opportunity to meet and work with students from across campus. This is also a great opportunity to get involved in leadership on campus through networking and involvement.

Sisterhood Events

Joining a Panhellenic organization is a great way to meet people and create lifelong friendships. Many organizations hold events to help bond chapter members. Sisterhood events, date parties, member class mizers, etc. create lasting memories for Panhellenic members.

Educational Programming

Fraternity and Sorority Programs and Services and the Panhellenic Association host various educational programs each year to educate our students on topics such as leadership and risk management. Our programs include the following:

- Hazing and alcohol education
- Sexual assault awareness and active bystander training
- Positive social media strategies

Safebreak

Safebreak is an annual event hosted by the Panhellenic Association each year before Spring Break. The event is focused on safety and smart decision-making during Spring Break.

Each year, we celebrate the life of Lisa Weider a beloved member of the Panhellenic community and Alpha Omicron Pi sisterhood at OU who tragically passed away during her Spring Break vacation in 2004.





FINANCIAL

Information

Financial requirements are an important consideration for students participating in sorority recruitment, so it is important to be as informed as possible with the costs associated with the sorority experience. If you accept an invitation to join a chapter, you will enter into a financial agreement and contract for housing and membership dues and fees during your collegiate years.

Dues and fees vary from chapter to chapter and year to year. It is important to note sorority costs may be more expensive during your first year in the organization due to one-time fees and expenses. It is also important to note that additional costs may arise during the year for items such as pictures, t-shirts, or other miscellaneous items.

At the University of Oklahoma, 73% of Panhellenic women received financial aid in 2020 and over \$11.8 million in scholarships have been awarded to Panhellenic members in the last year.

2021 - 2022 FINANCIAL BREAKDOWN

Costs below are for a full academic year at the University of Oklahoma.

Member In-House Fees include room/board as well as organizational membership fees.



FIRST YEAR MEMBER FEES

Average: \$3,702.63
Range: \$2,506.00 - \$4,550.00

IN-HOUSE MEMBER FEES

Average: \$9,963.39
Range: \$7,802.00 - \$11,675.00

OUT-OF-HOUSE MEMBER FEES

Average: \$3,172.68
Range: \$2,261.00 - \$3,580.00

SORORITY LIVING

Sorority members have the opportunity to live in beautiful, historic homes just off of campus. Chapter houses are privately owned and maintained by local and national sorority alumnae housing corporations.

Once a student has accepted a bid to join a sorority chapter at OU, new members do not typically live in chapter housing. Typically, sorority members do not move into the chapter facility until their sophomore, junior, or senior years. Upperclassmen may have an obligation to live in the chapter house; however, each chapter regulates membership living. Check out some features of our sorority homes below:

Panhellenic Housing

All 11 of our Panhellenic organizations have chapter facilities. In the 2019-2020 academic year, about 29% of Panhellenic members lived in sorority chapter housing. Many of these facilities include full room/board, laundry, parking, and close access to campus.

House Directors

Panhellenic chapter houses employ full-time, live-in House Directors, sometimes referred to affectionately as, "house mothers." The House Director oversees the daily operations of the facility and ensures it meets all health and safety standards.

Living "In House"

Nearly 900 women live in Panhellenic chapter facilities each year. Women that live "in house" get to enjoy living with their sorority sisters. Most Panhellenic women live in their sophomore year and perhaps junior or senior years if involved in chapter leadership.

Living "Out of House"

Not all Panhellenic women live in chapter housing. Many live in on-campus housing, or privately owned off-campus housing options. Out of house members are always welcome in the facility and often eat 1-2 meals a week at the chapter house with friends and sisters.

FINANCIAL *Transparency*

On February 20, 2019 the University of Oklahoma Panhellenic Association voted to adopt a resolution regarding financial transparency during Panhellenic recruitment processes. In a spirit of transparency and accountability, this information will be provided to potential new members and other Panhellenic constituents before, during, and after the University of Oklahoma Formal Recruitment process.

The information below includes all required costs of Panhellenic membership for the 2020 – 2021 year as reported in May 2021. Total costs below include member dues, chapter fees, and assessments including inter/national fees, required apparel, housing and/or parlor fees, etc.

ORGANIZATION	NEW MEMBER YEAR	MEMBER IN HOUSE	MEMBER OUT OF HOUSE
Alpha Chi Omega	\$3,931.00	N/A	\$3,450.00
Alpha Gamma Delta	\$3,348.00	\$10,292.00	\$2,992.00
Alpha Omicron Pi	\$3,972.00	\$11,675.00	\$3,580.00
Alpha Phi	\$4,273.48	\$11,655.25	\$3,551.70
Chi Omega	\$3,255.00	\$11,435.00	\$2,925.00
Delta Delta Delta	\$4,043.00	\$11,050.00	\$3,230.00
Delta Gamma	\$2,446.00	\$7,586.00	\$2,116.00
Gamma Phi Beta	\$2,900.00	\$9,550.00	\$2,650.00
Kappa Alpha Theta	\$4,641.25	\$8,975.25	\$3,122.25
Kappa Kappa Gamma	\$4,517.00	\$11,327.00	\$3,062.00
Pi Beta Phi	\$3,704.00	\$9,174.00	\$3,148.00
AVERAGE	\$3,700.17	\$10,024.10	\$3,001.94
RANGE	\$2,446.00 - \$4,517.00	\$7,586.00 - \$11,655.25	\$2,116.00 - \$3,551.70

New Member

Totals include all required costs including initiation fees, inter/national initiation fees, lowest badge or pin costs, and a set number of meals at the chapter facility each week.

Member In House

Totals include all required costs including membership dues and fees, room and board costs, and chapter parking. Price does not necessarily include laundry. For comparison, the cost of the University of Oklahoma residence halls for the 2020 – 2021 academic year is \$11,324 for a Tower double room including room and board costs. A full list of rates can be found at ou.edu/housingandfood.

Member Out of House

Totals include membership dues and fees and a set number of meals at the chapter facility each week.

RECRUITMENT TEAM

The Panhellenic Association is a student-led organization and Panhellenic women step away from their chapters to join our full-time professional staff to organize and coordinate the formal recruitment process. Meet the 2021 Panhellenic Recruitment Team below!



Heidi Young and Mackenzie Tullier

The University of Oklahoma is dedicated to finding your home away from home and we believe Panhellenic is the place for you. Panhellenic can help you grow into the best version of yourself during your undergraduate years, and beyond. The University of Oklahoma's Greek community is built on fostering high ideals of friendship, scholarship, community service, and leadership.

The University of Oklahoma has 11 amazing and unique chapters on our campus. Recruitment is a great way to become a member of a panhellenic chapter. By choosing to go through recruitment, you will meet many amazing panhellenic women that want to get to know you, and help you find your home here in OU Panhellenic. Please take the time to read this guide to better help you understand how sorority life can benefit your college career-- and decide if the Formal Recruitment process is right for you.

With that, we formally invite YOU to meet our 11 Panhellenic chapters and learn about what makes each unique and what they have to offer. Each chapter has many opportunities that they provide to their members to enhance their collegiate experience. We are so excited for you to go on this journey with the University of Oklahoma Panhellenic and find the place that is best for YOU!

-Recruitment Team 2021

Operations Team



Mackenzie Tullier
VP RECRUITMENT OPERATIONS



Mandy Pope
OPERATIONS ASSISTANT

Mackenzie and Mandy oversee our recruitment logistics. For questions about scheduling, registration, or recommendation letters, feel free to reach out for assistance.

Programming Team



Heidi Young
VP RECRUITMENT PROGRAMMING



Cassidy Sullivan
HEAD RHO GAMMA

Heidi and Cassidy oversee our Recruitment Guide training, selection, and communications. For questions about our Rho Gamma program, please feel free to reach out.

CONTACT US!

For other questions or assistance, please feel free to email us at panhellenic@ou.edu. We are available all summer to answer any questions you might have. You can also contact us via phone at (405) 325-4006.
OPERATIONS TEAM: mackenzie.l.tullier@ou.edu amandapope251@ou.edu
PROGRAMMING TEAM: heidyoung257@gmail.com cassidy.sullivan12@ou.edu

REGISTRATION

Registration for the University of Oklahoma's Panhellenic Association Formal Recruitment 2021 opens on May 15. After this date, you can log on to our website, www.pan.ou.edu to register. Check out the information below for additional details.



Registration Deadlines

MAY 15

Registration opens on pan.ou.edu

AUGUST 1

Last day for refund / registration closes

Recruitment Housing

This year, as a result of the new Camp Crimson schedule, Panhellenic Formal Recruitment is happening a little later than a typical year. This means that our usual policy of requiring all potential new members to stay in the OU residence halls during Formal Recruitment is not in effect this year. OU students with residence hall contracts for the 2021-2022 academic year will move in to their residence halls August 10-12. OU Housing and Residence Life will send an email with more information about your specific move in date and time later this summer.

For students living off campus, you will not be required to stay on campus during the Formal Recruitment process. Some events, such as nightly meetings, may be held on campus but more specific schedule information will be available later this summer as well.

Recruitment Meals

Our recruitment schedule will look different from past years. There will be more time between recruitment events and additional events added to decrease the number of people per event. As recruitment will be occurring after the campus meal plan has started, students should use their campus meal plans during the Formal Recruitment process. Those students without meal plans or living off campus will have time to grab food at home or on campus during recruitment rounds.

Registration Tips

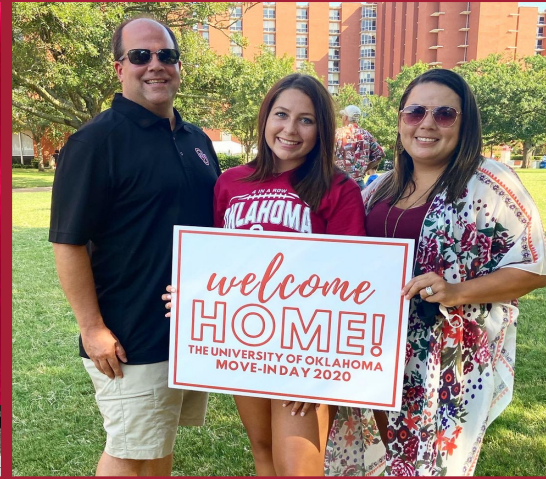
- Be prepared. Have your updated resume, transcripts, and test scores nearby to plug into our online system. You will be prompted to enter this information that will be released to the 11 chapters.
- Make sure you know your OU Student ID number.
- Save a high-quality photo of yourself. Our online system will prompt you to upload an image with your profile. Make sure it is a high-quality image so that chapters will be able to clearly see you!
- Don't be humble. This is a time to brag on yourself and all the awesome things you have done prior to going through recruitment.
- Be honest. Our team does cross-check grade data with the University of Oklahoma's records office. The grades you were admitted to the university with will be the grades listed on your profile. E-mail panhellenic@ou.edu for questions.
- Make sure to submit your payment. You will not be registered for recruitment until you have submitted your \$100 registration fee.

MOST IMPORTANTLY...

The chapters are so excited to get to know YOU for YOU. Don't be nervous to talk about your values and what makes you passionate. Be confident and know that there is a place for anyone among our chapters!

JOIN SOONER PARENTS!

*Become a part of the Sooner Family!
Visit parents.ou.edu.*



A Letter from Our Sooner Parents President

Welcome to the University of Oklahoma, a university with 130 years of Academic Leadership. Your student has embarked on an amazing adventure and will blaze new trails into their future. OU will provide your student with a rich sense of community that includes students, faculty, and staff. The Sooner Parents organization offers you a unique opportunity, as OU's official parent's association, and is here to assist and partner with you on your family's extraordinary journey.

Having been born and raised a Sooner and as an alumnus of The University of Oklahoma, I am honored that all 3 of my children are currently attending or have graduated from OU. The education and unique opportunities provided by OU has given each of them a solid foundation from which to grow and succeed.

As you begin your journey as part of our Sooner family I encourage you to become a part of the Sooner Parents organization.
Boomer Sooner!



Patti Smith
Sooner Parents President
Dallas, Texas

Benefits of Membership!

- Monthly Member-only E-Newsletters
- Early Notification of Fall and Spring Parent's weekends
- Access to purchase identified home football tickets
- \$20,000 in Scholarships available to students of Sooner Parents members
- Local Discounts
- Opportunities to volunteer

ROUND I

Open House

Round I of Formal Recruitment is an open house round, meaning all potential new members will visit all 11 Panhellenic chapter facilities over one-day. This round of recruitment focuses on the importance and excitement of “going Greek.” PNMs will be visiting each chapter in person and will have the chance to visit with all of our amazing Panhellenic chapters.

ATTIRE SUGGESTIONS



Round I of Formal Recruitment can be filled with a lot of walking and can be quite hot. We will be providing a Panhellenic t-shirt for this round. We encourage you to wear something that will make you feel comfortable and confident while you converse with chapters.

Perhaps consider sporting your favorite skirt or shorts and wearing colors that make you feel best! We suggest wearing shoes comfortable for walking in the heat.

What to Know

ROUND 1 - OPEN HOUSE

Spend some time checking out our Panhellenic chapters prior to recruitment beginning. We suggest learning a little about the basics of each chapter through their websites and social media.

There is a lot of walking during this round of recruitment. We suggest wearing comfortable shoes. It's important to feel comfortable and confident going into this round of recruitment.

You may be conversing in a group - be an active listener and get to know lots of OU students this round.



Don't stress about getting to and from each chapter event. You'll be lead by some of our Rho Gammas this round. They'll make sure you are on time and where you should be.



The Basics

- Round I is August 17-18, 2021
- 11 parties attended over 2 days

You will be grouped alphabetically and

- will be lead to each chapter facility by a recruitment guide, also known as a Rho Gamma



TIPS & TRICKS

This day can feel very long - you'll get to meet a lot of people. Find a method to keep track of the chapters you visit with to help with your selections at the end of Round I, one common method is jotting down notes in a journal after each party.

We suggest keeping a water bottle, some supplies to freshen up, and some deodorant close. It can be very hot in Oklahoma in August!

WHAT TO EXPECT

This is a "get to know you" round. Members will be asking you about yourself so have some talking points ready.

Round I is a great time to ask general questions about sorority life at OU. You can ask more specific questions about the chapter during later rounds of recruitment.

ROUND II

Philanthropy

Round II of Formal Recruitment is focused largely on the Panhellenic pillar of philanthropy. PNMs can attend a maximum of 8 chapters after making selections following Round I. Each PNM will have their own party schedule that their Rho Gammas will deliver the morning of Round II. PNMs will be visiting each chapter in person at the chapter facilities. PNMs will learn about chapter philanthropies and the event will focus on conversation surrounding service and philanthropy.

ATTIRE SUGGESTIONS



Much like Round I, we recommend wearing something you feel most confident in. Be yourself and wear something that you like! You will be able to focus on having great conversations if you feel good about how you look. For Round II many people wear sundress, rompers, or skirts with a blouse. We also recommend you wear shoes or sandals that are comfortable to walk in. Stay true to yourself and let your personal style shine through!

**Outfits styled by Lucca Boutique Norman*

What to Know



The Basics

- Round II is August 19, 2021
- PNMs can attend a maximum of 8 parties
- Each PNM will have an individualized party schedule that will be delivered to their residence hall room by their Rho Gamma in the morning.

WHAT TO EXPECT

Chapters will be telling you about their philanthropy and service they enjoy doing in the OU and Norman community.

Think about what philanthropic work you are passionate about or what service you have done in your own community. Ask about ways you can serve as a sorority member.

Don't hesitate to promote your own passion and work in philanthropy and community service. Chapters want to know how you give back to your community.

Many chapters will share presentations on their philanthropy and the role it plays in their organization. Ask them questions! This is an opportunity to know more about each philanthropy, their service events, and the member connection to their philanthropy.

TIPS & TRICKS

Round II will be conducted in-person. The Oklahoma weather can be unpredictable so we suggest you prepare for warm weather as well as rain. Many PNM's bring a fan and water to keep cool and hydrated throughout the day.

Since you will be visiting up to 8 chapters, we suggest you jot down quick notes after parties so you can remember your conversations and feelings throughout the day.

ROUND III

Sisterhood

Round III is our sisterhood round - a round that gives PNMs and chapter members the chance to connect about the values that drive their actions. PNMs can attend a maximum of 5 parties, each containing a tour of the chapter facility, longer conversation time to dig deeper into the values and sisterhood of our organizations, and more time for questions.

ATTIRE SUGGESTIONS



Round III is focused on going deeper into intentional conversations. The attire for this round is slightly dressier than Round II and we encourage PNMs to wear outfits that make them feel most themselves. Many people wear dresses, rompers, jumpsuits, or skirts during this round. Additionally, this round of recruitment contains a house tour so think about that when choosing your shoes. Wedges, platforms, and sandals are often preferred over heels due to the stairs and the distance between facilities.

Again, wearing something that makes you feel great will allow you to focus on the important conversations during this round.

**Outfits styled by Lucca Boutique Norman*

What to Know



The Basics

- Round III is August 20, 2021
- PNMs can attend a maximum of 5 parties
- Each PNM will have an individualized party schedule that will be delivered to their residence hall room by their Rho Gamma in the morning

WHAT TO EXPECT

Round III is focused on sisterhood, campus involvement, and values. Think about these things before the round begins.

Share with the chapters what you are looking for in a sisterhood and what you value in a friendship. This will help you understand how you may fit into their sisterhood.

Think about asking questions about the chapter's sisterhood traditions and what they do on campus. Find where you feel values match up.

This is a great time to learn about what the life of a member in these chapters is like. Take this opportunity to picture yourself growing bonds in each of the chapters you visit. You may have to make hard decisions following this round so be present in your conversations!

TIPS & TRICKS

We suggest if you are going to wear heels that you bring comfy shoes to walk in to each chapter house. Bring a bag to stash your walking shoes in while you are in the party. You can change shoes before going in.

There will be lots of down time during this round of recruitment. We encourage you to use this time to get prepped and ready for the fall term beginning on the 23rd!

It will likely be hot so bring along a bit of make-up and/or deodorant to freshen up throughout the day.

When choosing an outfit, keep in mind that short or tight dresses may be difficult to climb stairs in.

ROUND IV

Preference

Preference round is the last round of Formal Recruitment before Bid Day! An invitation to preference round means the particular sorority is very interested in extending membership to you. The parties will focus on the core aspects of sorority life, including friendship, sisterhood, and tradition. This will be your last chance to interact with members before final selections are made.

ATTIRE

SUGGESTIONS



Attire for Preference round is typically more formal than other rounds of recruitment. Many PNMs wear a cocktail dress or a similar outfit with heels or wedges. A great way to think of attire for this round is what you would wear to an evening wedding. Women wear all kinds of dresses or other formal outfits during this round of recruitment. Dress in a way that makes you feel like your best self. There is less walking and standing during this round which makes it easier to wear heeled shoes. This round is typically more serious and formal and you should wear anything that you feel reflects your personal style! Chapters are focused having meaningful conversation with you!

**Outfits styled by Lucca Boutique Norman*

What to Know

WHAT TO EXPECT

Parties during Preference round are longer than previous rounds. Expect to spend more time with chapter members. The conversation will be much deeper and meaningful, enjoy your time with the members!

Preference round is a great time to ask any last-minute questions you might have. Chapter and Panhellenic team members are happy to help. We understand it is a big decision!

This is a time to reflect on all you learned about the chapters. During this round you will deepen your connections with the chapters that were formed each round.

You will make final selections after your last party so it is important to be present throughout this round.

TIPS & TRICKS

Preference round can be a long day with a lot of down time. Use this time to reflect on your experience and all that you learned during recruitment!

Make sure your phone is charged. You will make your final selections after your last party with Panhellenic on your phone.

After each party, take a few moments to reflect on what the chapter you visited means to you and how you may see yourself within it.

The decision following this round may be difficult so we encourage you to reach out to Rho Gammas or Panhellenic team members if you need any support!



The Basics

- Round IV is August 21, 2021
- PNMs can attend a maximum of 2 parties
- Party rounds are 60 minutes
- Each PNM will have an individualized party schedule that will be delivered to their residence hall room by their Rho Gamma in the morning.

SCHEDULE

Summer/ Fall 2021

SATURDAY, MAY 15

Recruitment Registration Opens
Register for Fall Formal Recruitment at
www.pan.ou.edu.

SATURDAY, AUGUST 1

Registration Deadline

Register for Formal Recruitment at before
this date before fee increases to \$145.
Last date for refund request minus \$15
service charge.

AUGUST 10-12

Residence Hall Move In

Potential New Members arrive and move into
residence halls. Registration tents will be
located in the housing areas and detailed
instructions will be sent via email in July.

There will be parent and family sessions this
day. Updated schedule to come!

AUGUST 13-20

Camp Crimson Week

This year Camp Crimson will be held the
week before classes begin. From Friday,
August 13 to Monday, August 16, incoming
OU students will participate in Camp
Crimson programming. On August 17
individuals participating in recruitment will
begin Formal Recruitment programming.

Students will be able to participate in
BOTH Camp Crimson and Fall Formal
Recruitment.

AUGUST 17-21

Fall Formal Recruitment

Fall Formal Recruitment will take place
the Tuesday-Sunday before classes begin.

TUESDAY, AUGUST 17

Virtual Round I - Open House

Potential new members will visit all 11
chapters virtually over two days.

WEDNESDAY, AUGUST 18

Virtual Round I - Open House

Potential new members will visit all 11
chapters virtually over two days.

THURSDAY, AUGUST 19

Round II - Philanthropy Day

Potential new members attend a maximum
of eight parties.

FRIDAY, AUGUST 20

Round III - Sisterhood Day

Potential new members attend a maximum
of five parties.

SATURDAY, AUGUST 21

Round IV - Preference

Potential new members attend a maximum
of two parties. More information to come in
mandatory educational session.

SUNDAY, AUGUST 22

Bid Day

Bid Day plans will be released at a later
date via email and updated on Panhellenic
social medias.

MONDAY, AUGUST 23

First Day of Classes

Classes begin at the University of Oklahoma.

FORMAL RECRUITMENT POLICIES

Formal Recruitment Guidelines

- A student must be an enrolled, full-time undergraduate student at the University of Oklahoma (Norman or OUHSC campus) to be eligible to participate in formal or informal recruitment activities.
- Potential new members must register with the University of Oklahoma Panhellenic Association and pay the registration fees in order to participate in Formal Recruitment.
- All students participating in Formal Recruitment are not required to live in the OU residence halls during the week of recruitment.
- PNMs must abide by the Membership Recruitment Guidelines published in the University of Oklahoma Panhellenic Association Recruitment Look Book and NPC Unanimous Agreements.
- PNMs participating in Formal Recruitment must wear the name tags provided by the Panhellenic Association during all Formal Recruitment activities. Preferred names should be used on Zoom profiles for virtual recruitment events.
- PNMs participating in Formal Recruitment may not visit any fraternity chapter from August 10, 2021 - August 22, 2021, Sorority members may not visit chapter facilities during fraternity recruitment.
- PNMs must attend all Formal Recruitment events at the designated times. A PNM must receive prior approval from the Panhellenic Recruitment Chairmen or the Panhellenic Advisor to miss any event during the week.
- A PNM participating in Formal Recruitment shall not be, nor have ever been, an initiated member of a NPC organization.
- A student is ineligible for Panhellenic membership recruitment if they have been a new member of a NPC sorority at the University of Oklahoma in the same calendar year.
- A student shall complete the "Membership Recruitment Acceptance" card immediately following the last preference event they attend. Once a "Membership Recruitment Acceptance" has been signed and submitted, no changes may be made. For questions, please ask the Panhellenic Recruitment team.
- A student signing a "Membership Recruitment Acceptance" card and receiving a bid at the end of Formal Recruitment shall be bound to the chapter they matched with by the agreement for one calendar year at the University of Oklahoma per NPC policies.
- Failure to follow any of these rules could result in dismissal from the Formal Recruitment process.

Summer Contact

This year, the National Panhellenic Conference has amended the summer contact policies. Chapters may reach out to PNMs to promote the overall sorority experience - not recruit for their own organization. This contact should be in the Panhellenic spirit. Should a PNM not feel comfortable with this contact, please reach out to Panhellenic at panhellenic@ou.edu

No student is eligible to join a sorority in the summer months or anytime when school is not in session with the exception of the end of Formal Recruitment.

Legacy Information

A legacy is defined as a daughter or sister of an initiated sorority member unless an international or national organization recognizes additional relations.

A legacy may not be given any gifts by the legacy sorority. Nor may they be allowed to purchase merchandise from a chapter.

Potential new members may not spend the night at a sorority house unless prior approval is obtained from the Panhellenic Advisor. However, a legacy is permitted to spend the night at a legacy sorority house, upon invitation, during the academic year.

Recruitment Policies

The University of Oklahoma Panhellenic Association Membership Recruitment Guidelines are intended to help guide fraternity members and PNMs through the membership selection process and Formal Recruitment Week.

The guidelines incorporate many of the procedures recommended by the National Panhellenic Conference.

For more information, please visit www.npcwomen.org, www.pan.ou.edu, or give us a call at (405) 325-4006.

ZERO TOLERANCE POLICY

If an individual breaks any of the policy outlined by the Panhellenic Association Code of Ethics, they may be completely removed from the Formal Recruitment process.

RECOMMENDATION LETTERS

A letter of recommendation, sometimes referred to as a “rec” or a RIF (Recommendation Information Form) is a recruitment information form that is completed by an alumna of a specific sorority. These forms are used to introduce a potential new member to the alumna’s sorority chapter at the University of Oklahoma.

Recommendation Information

Sororities appreciate and use the information provided in letters of recommendation to assist in their recruitment selection process.

Some sororities might require a letter of recommendation, but it is important to understand that, if a sorority requires a recommendation, it is that individual sorority’s responsibility to obtain said recommendation, not the responsibility of the potential new member.

It is permissible for a PNM to ask a sorority alumna member to complete a recommendation for her own chapter. However, it is inappropriate for a PNM (or anyone on the PNM’s behalf) to contact an alumna member that they does not know to ask for a recommendation. Each national sorority has its own guidelines and its own recommendation forms the alumna must use. If an alumna is not familiar with her own sorority’s regulations, she should contact the national organization.

The OU Panhellenic Association has created a recommendation letter guide available at www.pan.ou.edu. There is a lot of helpful information on our Recommendation Letters page of our website. Please refer to this guide for questions about the recommendation process. If you have additional questions, feel free to reach out for assistance. Our team is happy to help.

Tips and Tricks

Always send a thank you note. Alumnae

- members are busy and sending them a brief thank you will let them know you appreciate them and their time.

Know what to send. Chapters need only the

- recommendation forms from alumnae members. They do not need packets, gifts, or anything else mailed to their facilities. Forms can be sent to the chapter facilities themselves, or the Panhellenic office.

Get them in early. There is no official deadline

- for when letters of recommendation must be received, but we suggest before August 1 to give the chapters ample time to process that paperwork.
- Use your network. If you are worried about finding references, ask teachers, coaches, family friends, or anyone else you feel comfortable talking to. You might find you know more sorority women than you think.

Chapter Mailing & Web Addresses

Alpha Chi Omega

1115 College Avenue
Norman, OK 73072
oualphachi.com

Alpha Gamma Delta

930 Chautauqua
Avenue
Norman, OK 73069
ou.alphagammadelta.org

Alpha Omicron Pi

1411 Elm Avenue
Norman, OK 73072
ou.alphaomicronpi.org

Alpha Phi

1401 College Avenue
Norman, OK 73072
alphaphisothers.com

Chi Omega

820 Chautauqua
Avenue
Norman, OK 73069
oklahomachiomega.com

Delta Delta Delta

1611 College Avenue
Norman, OK 73072
ou.tridelta.org

Delta Gamma

744 Elm Avenue
Norman, OK 73069
oudeltagamma.com

Gamma Phi Beta

1105 College Avenue
Norman, OK 73072
oklahomagphi.org

Kappa Alpha Theta

845 Chautauqua
Avenue
Norman, OK 73069
outheta.com

Kappa Kappa Gamma

700 College Avenue
Norman, OK 73069
ou.kappa.org

Pi Beta Phi

1701 Elm Avenue
Norman, OK 73072
ou.pibetaphi.org

HEALTH AND SAFETY

Covid Considerations

OU Panhellenic understands that this year has been an unpredictable. Based off of the experiences recruitment and programming over the past year we have taken steps to make sure that formal recruitment 2021 will be safe and seamless for the community. We will be closely monitoring and working with University officials when making plans.

We are moving forward with a Hybrid Recruitment plan with the understanding that we could shift to a fully In-Person Recruitment plan should things go well this summer. We'll be updating the Panhellenic website and social medias if recruitment plans change throughout the summer.

Hybrid Recruitment Plan

ROUND 1	Virtual over 2 days
ROUND 2	In-Person
ROUND 3	In-Person
ROUND 4	In-Person
BID DAY	In-Person, Shifts or Large Group events

University of Oklahoma Covid Policies

As of May 2021, the University of Oklahoma announced that they are lifting mask and social distancing requirements for fully vaccinated individuals. on campus in accordance with CDC guidance and low COVID cases in Oklahoma. Any further policy changes will be released through OU official email.

The University also invites individuals to continue to wear masks or get vaccinated if they feel more comfortable doing so. Visit ou.edu/together for updated policies.

Virtual Options

There will be virtual options available to anyone going through recruitment upon request.

Party Sizes

We are looking at adding parties to help make party sizes more manageable and comfortable.

TERMS TO KNOW

ACTIVE

A fully initiated member of a sorority who is currently participating as a member.

ALUMNAE

Sorority members who are no longer active, collegiate members of a Panhellenic organization.

BADGE

Also known as a pin, the badge is an item of jewelry given to members upon initiation. Badges are often worn to chapter events and functions.

BID

An invitation to join a Panhellenic sorority. Bids are given during formal or informal recruitment to potential new members. Once a potential new member accepts a bid, they become a new member.

BIG SISTER

Nickname for a big sister, a mentor assigned to a new member. Many organizations have special names and ceremonies for these pairings.

CHAPTER

A branch of a national fraternity or sorority established at a campus. Each will have their own name, usually designated by Greek letters.

CONTINUOUS OPEN BIDDING

An informal recruitment process that Panhellenic sororities use to recruit new members outside of the primary formal recruitment period. This type of recruitment is also called "informal recruitment" or "spring recruitment" during the spring term.

INITIATION

A ceremony during which new members receive full and life-long membership privileges. Initiation ceremonies are held during the first semester of membership.

INTENTIONAL SINGLE PREFERENCE (ISP)

When a student only lists one sorority on their Membership Recruitment Acceptance Binding Agreement (MRABA) form when two options are available. Students who ISP are not maximizing their options.

LEGACY

The daughter, sister, grandchild (and in rarer cases niece) of an organization's member. National organizations determine legacy status for that specific organization.

LITTLE SISTER

Sometimes called "littles." This is the nickname for a Big's new member that they mentor during their collegiate career.

MAXIMIZING YOUR OPTIONS

A phrase used during the primary, fall formal recruitment process. To maximize your options means to utilize all the options available to you. At the University of Oklahoma, you are required to maximize your options in each round with the exception of Preference Round (Round IV). Maximizing your options is always recommended.

NATIONAL PANHELLENIC CONFERENCE

Also known as "NPC." NPC provides support and guidance for its 26 member national or international sororities / women's fraternities and organizations.

NEW MEMBER

A student who has accepted a sorority bid but is not yet an initiated member.

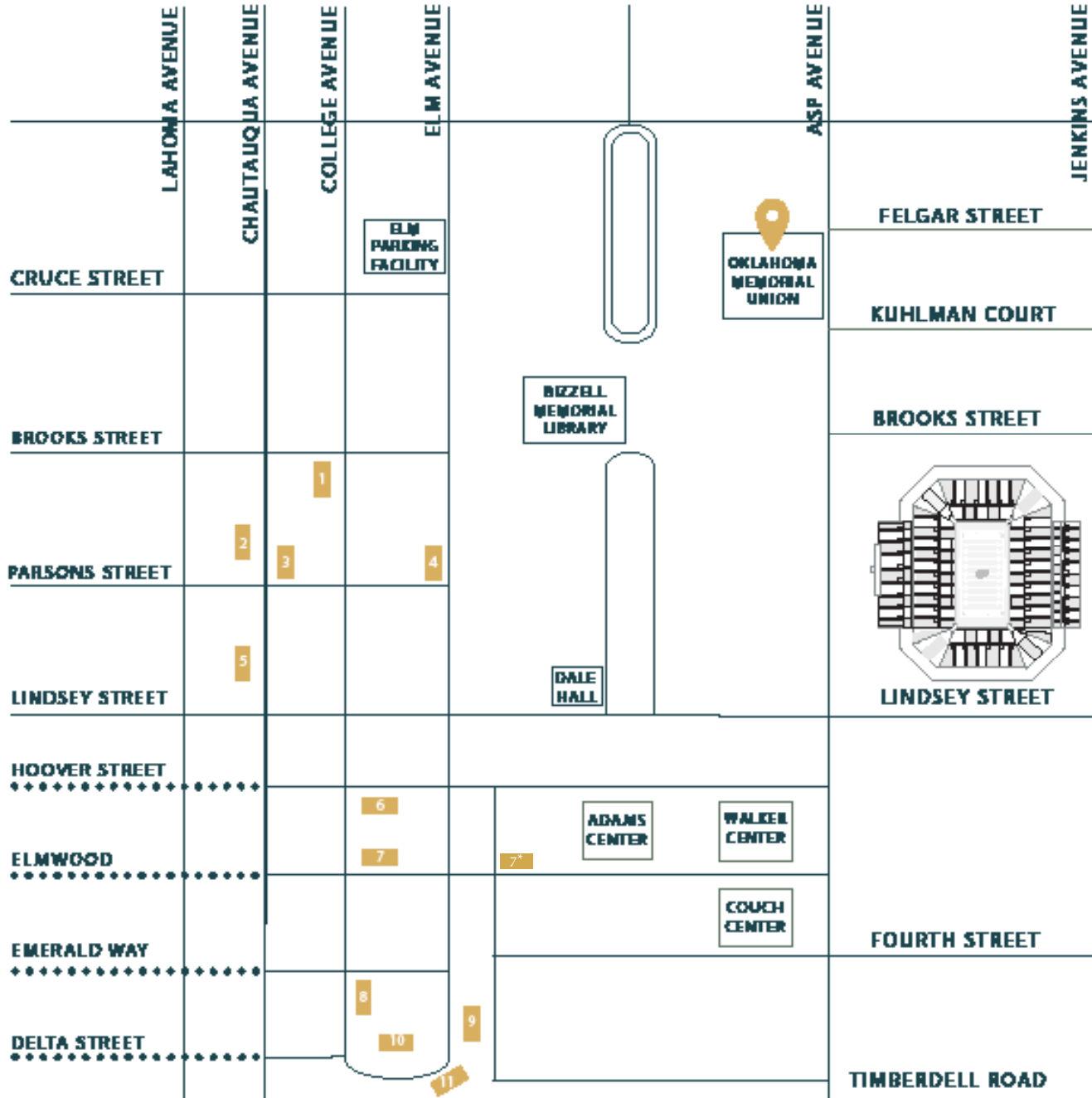
PARTY

When a PNM attends a round of recruitment, that specific round is called a "party."

POTENTIAL NEW MEMBER

A PNM is a student participating in any kind of Panhellenic recruitment process.

PANHellenic FACILITY MAP



SORORITY CHAPTER FACILITIES

- 1 Kappa Kappa Gamma (KKΓ)
- 2 Chi Omega (ΧΩ)
- 3 Kappa Alpha Theta (ΚΑΘ)
- 4 Delta Gamma (ΔΓ)
- 5 Alpha Gamma Delta (ΑΓΔ)
- 6 Gamma Phi Beta (ΓΦΒ)
- 7 Alpha Chi Omega (ΑΧΩ)
- 7* BCM - Alpha Chi Omega recruitment location
- 8 Alpha Phi (ΑΦ)
- 9 Alpha Omicron Pi (ΑΟΠ)
- 10 Delta Delta Delta (ΔΔΔ)
- 11 Pi Beta Phi (ΠΒΦ)



Fraternity and Sorority Programs and Services
Oklahoma Memorial Union
900 Asp Ave., Suite 370
Norman, OK 73019

Visit [pan.ou.edu](https://www.ou.edu/studentlife/fsp/contact/chapter-facility-map) for individual chapter house addresses.
<https://www.ou.edu/studentlife/fsp/contact/chapter-facility-map>

CONTINUOUS OPEN BIDDING

Continuous Open Bidding (COB), sometimes referred to as “Informal Recruitment,” is a way for students interested in joining our Panhellenic system to become members in a less formal way. Continuous Open Bidding is a chapter-driven process through which chapters invite students to recruitment events independent from Panhellenic. This type of recruitment process happens in the spring and fall terms.

Fall Semester

The interest form for Fall 2021 COB will open at 8:00 AM on August 23. Access the form at pan.ou.edu or by visiting the Panhellenic Engage portal.

Chapter participation will be determined following Formal Recruitment 2021. For questions on chapters that will be COB eligible, please email panhellenic@ou.edu after 8:00 AM on August 23.

Last fall, 5 chapters were COB-eligible and about 60 students joined our community through the informal recruitment process.

It is important to note that should you decide to go through the formal recruitment process and be matched with a chapter after preference round, you will not be eligible to participate in any kind of Panhellenic recruitment process at OU until the start of the next primary recruitment period (Fall 2022 Formal Recruitment).

Our team can help you determine your eligibility should you have questions.

Spring Semester

The interest form for Spring 2022 COB will open mid-December 2021. Access the form at pan.ou.edu or by visiting the Panhellenic Engage portal.

Chapter participation will be determined following the reset of total on the Wednesday of the first week of classes. For questions on chapters that will be COB eligible, feel free to reach out in mid-January.

Typically four to five chapters are COB-eligible. Last spring, 100 women joined our community through the informal recruitment process.

In the spring, Panhellenic will host an informational meeting the first week of the spring term. Follow us on social media to hear about that event as the date approaches.

Should you participate in Formal Recruitment and be matched with a chapter after preference round, you will not be eligible to participate in COB during the Spring 2022 term. Let us know if we can help assist you in determining your eligibility.

Registration for COB is free. You can access the form at pan.ou.edu or by visiting the Panhellenic Engage portal. The information you provide will be sent to COB-eligible chapters in that semester. Should you wish to participate in COB in different semesters, that form will need to be filled out for each term participation occurs.

Common Questions

HOW CAN I SIGN UP?

Signing up for COB is quick and easy. You can visit pan.ou.edu or the Panhellenic Engage portal to fill out the form. This information you provide in this form will be distributed to all COB-eligible chapters.

WHAT CHAPTERS PARTICIPATE IN COB?

Unlike Formal Recruitment, not all of our 11 chapters will participate in COB. Each term, campus total is calculated using chapter median size, or the previous fall's total size (whichever is larger). Any chapters that are not at or above the campus total number are eligible to participate in COB.

Our team will know what chapters are COB-eligible after the following dates. Feel free to reach out to panhellenic@ou.edu to inquire for either semester:

Fall 2021 after 8:00 AM on August 23, 2021

Spring 2022 after the Wednesday of the first week of classes.

HOW WILL CHAPTERS KNOW I WANT TO PARTICIPATE?

The Panhellenic Vice President of Recruitment Programming or the Panhellenic Adviser will give a copy of your Informal Recruitment Information Form to all eligible chapters. The chapters will then contact you directly if they are interested in inviting you to a recruitment event.

These recruitment events are often informal in nature. Some examples can include: dinner at the chapter house, grabbing frozen yogurt with current members, a movie night or game night with the chapter, or attending an OU event or sporting event. Chapters arrange these events and control the guest lists.

HOW CAN I FIND OUT IF I AM COB-ELIGIBLE?

COB-eligibility is determined on several factors. If you have never gone through a Panhellenic recruitment process and have never been affiliated in any way with a NPC organization, you are COB eligible!

Students who went through the Formal Recruitment process and were matched with a chapter after preference round are not COB eligible until the following year.

For questions about your COB-eligibility, please call (405) 325-3163 or email panhellenic@ou.edu. Our team can help you determine if you are COB-eligible for that term.

Let's Chat!

If you have questions regarding Continuous Open Bidding, please reach out. Our team is here and happy to help assist.

You can contact us at:
panhellenic@ou.edu
(405) 325-4006

FREQUENTLY ASKED QUESTIONS

Greek or Panhellenic membership can come with many questions. We have provided some frequently asked questions our team often receives. However, if you have additional questions or need assistance, please don't hesitate to reach out. The Panhellenic team is always happy to assist where we can. You can reach us at panhellenic@ou.edu or by calling (405) 325-4006 during business hours (Monday - Friday 9:00 a.m. - 5:00 p.m.).

HOW MUCH TIME DOES A SORORITY REQUIRE?

There is a required meeting once a week where you will exchange information on chapter events and fraternity education. Weekly chapter study sessions are an option for all members, along with events such as sisterhood activities, community service projects and social events.

ARE UPPERCLASSMEN ALLOWED TO PARTICIPATE IN RECRUITMENT ACTIVITIES?

Many sororities look for a four year commitment; however, most of our groups do consider upperclassmen in their recruitment process. Fewer upperclassmen than freshmen participate in Formal Recruitment and fewer join chapters. We cannot predict any one person's recruitment experience. The best advice is to go through the process with an open mind.

IS THERE A GPA REQUIREMENT TO PARTICIPATE IN FORMAL OR INFORMAL RECRUITMENT?

The OU Panhellenic Association does not require a certain GPA to participate in Formal Recruitment. However, each sorority has a minimum GPA to be considered for membership and initiation. The average GPA to join is around a 3.25 and the average GPA for an upperclass student is around a 3.00. These grades are pulled from university records.

DO I NEED TO ATTEND ALL PARTIES LISTED ON MY RECRUITMENT SCHEDULE?

Yes. The objective of recruitment as a potential new member is to learn as much as you can about the OU Greek community and the chapters so you can make an informed decision regarding membership.

If you intentionally miss an event you were invited to, you are not maximizing your options and could be released from the Formal Recruitment process. Your Rho Gammas will be helpful in answering questions about maximizing your options and what that looks like for you as a PNM.

HOW LONG DOES IT TAKE TO BE INITIATED?

Most chapters have an initiation period that ranges from four to 12 weeks. The new member period offers opportunities to meet other members, learn fraternity history, and establish a level of comfort within the chapter. Each chapter builds its own new member program and sets its own initiation dates.

WHAT DOES IT MEAN TO "MAXIMIZE MY OPTIONS" DURING RECRUITMENT?

When a PNM makes a selection, it is in their best interest to rank all of the chapters they attended during that round. By ranking all chapters, she maximizes her ability to receive an invitation from any chapter for the next round.

If a PNM does not maximize their options, it is possible that she will receive zero invitations for the next round. OU Panhellenic strongly discourages intentional single preference. We will cover this in detail prior to selections each round of recruitment, especially Preference Round.

WILL ALL PARTICIPANTS PLEDGE A SORORITY AT THE END OF THE FORMAL RECRUITMENT PROCESS?

Recruitment is a process of mutual selection and, as such, there are many different outcomes to this process. Participation in Formal Recruitment does not guarantee an invitation to join a sorority, nor does it obligate you to join.

However, approximately 80-90% of the students participating in Formal Recruitment each year join a sorority at the end of the week! We encourage all participants to go through our process with an open mind. An open mind allows women to meet others and find the chapter they feel the most at home in.

Some students do decide that sorority life is not for them at during the recruitment process. We work with these women to get them plugged in on campus if they decide to withdraw from formal recruitment.

WHAT IF I WANT TO BE IN A CERTAIN SORORITY?

Only wanting to be a member of one specific sorority or only considering a few chapters can severely limit a PNM's options for membership and can lead to disappointment. Panhellenic discourages joining a sorority based on stereotypes or others' opinions. We encourage you to keep an open mind and make a decision that is best for you.

WHAT IS A LEGACY?

A legacy can be defined differently by each chapter, but most commonly, a legacy is defined as a potential new member who is the sister, daughter, or granddaughter of an alumnae sorority member.

AM I GUARANTEED A BID IF I AM A LEGACY?

If you are legacy you are not guaranteed a bid to your legacy's chapter. It does not hurt or help to be a legacy; it just notifies our chapters that you have a family member that was a part of that specific organization. Each chapter looks at the individual going through and will make their decision on what is best for their group at that time. We would encourage you to go through the process with an open mind.

The Panhellenic Association allows students to claim a legacy on their recruitment registration form. However, only the chapter(s) you claim will see that you are a legacy of that specific organization. We do not share legacy status with any other chapters.

DOES THE UNIVERSITY NEED A COPY OF MY ACADEMIC TRANSCRIPT FOR RECRUITMENT?

The Panhellenic Association will verify grade and test information from a potential new member based off of what she was admitted to the University of Oklahoma with. If a potential new member's academic records are updated with the university, please email Panhellenic (panhellenic@ou.edu) with your name, student ID number, and a brief message explaining that your academic records with Panhellenic need to be updated.

WHAT SHOULD I BRING TO RECRUITMENT?

Panhellenic t-shirts will not be provided during the Formal Recruitment process this year. We recommend wearing something that helps you feel comfortable and confident during our online rounds.

Other helpful hints:

-Consider bringing a change of shoes. There is a lot of walking during recruitment from chapter facility to chapter facility and bringing a change of shoes is strongly advised for in-person events.

-Plan ahead. Many students find it helpful to bring a bag with them with face towels, personal fans or cosmetic products.

-Water is provided for students going through the recruitment process but bringing a water bottle is advised as well.

-Don't be afraid to ask for tips. Recruitment Guides are great resources for students participating in the recruitment process and can provide helpful hints and tricks for a positive experience.

ARE LETTERS OF RECOMMENDATION REQUIRED?

No. Letters of recommendation are not required by Panhellenic or any of our member chapters for membership.

However, many students choose to ask alumnae of various organizations to complete a RIF (Recruitment Information Form), sometimes called a "rec letter" on their behalf. If you choose to do this, we recommend having those forms to the chapters by August 1.

If you do not know an alumna of a certain chapter it is inappropriate for you to ask someone that you do not know to write a recommendation form for you. Each chapter knows that it is their responsibility to find a recommendation for women going through the recruitment process that they would like to pledge.

Don't see your question?

If you don't see the answer to your question here, feel free to reach out to us! We are here to make the transition into college and the experience of recruitment easy! We regularly update information on our website: www.pan.ou.edu.

You can contact us directly at:

panhellenic@ou.edu

(405) 325-4006

QUESTIONS?

Let's Chat!

We hope this guide has answered the many questions you may have about 2021 Panhellenic Formal Recruitment. We understand this can be a daunting process, but it is such a fun one with so many people on your team.

The entire Panhellenic team is here to assist you before, during, and after recruitment. Please don't hesitate to reach out for assistance, questions, or advice. We are here for you! Find us on social media (@oupanhellenic), stop in during our office hours (Monday - Friday 9:00 a.m. - 5:00 p.m.), or give us a call.

Connect with Panhellenic



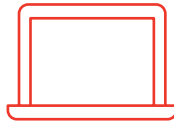
OFFICE OF STUDENT LIFE
OKLAHOMA MEMORIAL UNION
900 ASP AVE., SUITE 370
NORMAN, OK 73019 - 0390



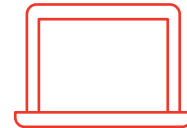
PANHellenic@OU.EDU



(405) 325-4006



WWW.PAN.OU.EDU
WWW.GREEK.OU.EDU



@OUPANHellenic
(Instagram & FaceBook)

WE CAN'T WAIT TO SEE YOU IN AUGUST! BOOMER SOONER,

Oklahoma Panhellenic Association

ABBAY RD



UNIVERSITY
CUISINE

PREMIER GREEK HOUSING FOODSERVICE PROVIDER



locally owned. locally operated.

405 801 3664

WWW.ABBEYROADUNIVERSITY.COM

Coca-Cola®

step up your refreshment



proud supporter of

**STUDENT
LiFE**

CAREER SERVICES • FITNESS + RECREATION • GENDER + EQUALITY CENTER • HEALTH SERVICES

HENDERSON SCHOLARS • HOUSING • LEADERSHIP & VOLUNTEERISM • MCNAIR SCHOLARS

PARENT AND FAMILY PROGRAMS • PRESIDENT'S COMMUNITY SCHOLARS • PRESIDENT'S LEADERSHIP CLASS

RESIDENCE LIFE • STUDENT CONDUCT • STUDENT LEGAL SERVICES • STUDENT LIFE • STUDENT MEDIA

STUDENT ORGANIZATION SERVICES • UNIVERSITY COUNSELING CENTER • UPWARD BOUND

NORMAN • HEALTH SCIENCES CENTER • TULSA • AREZZO, ITALY



STUDENTaffairs
Helping students thrive

Betty Lou's Flowers & Gifts

BETTYLOUSFLOWERS.COM

Rush Week Gifts

- Bid Day house flowers
- Good Luck flowers
- Birthday cupcakes
- Sorority house gifts
- Succulents and plants
- OU gifts
- Snack baskets



Call or visit us online today
to order your mid-week or
Bid Day gifts



(405) 364 - 2400
445 West Gray Street
Norman, OK 73069
bettylousflowers.com

Same Day Delivery to OU. Call Before 2:00 PM!