

THE UNIVERSITY OF OKLAHOMA

EMERGENCY RESPONSE PLAN

URL: <http://www.ou.edu/aa/erp.pdf>

Revised January 2009

Contents:

Main Section:

- 1) Creates Emergency Response Organization
- 2) Establishes Principles to Guide Response Efforts

Appendix A: p 13 Executive Notification Phone Tree

Appendix B: p 14 Tornados

Appendix C: p 18 Chemical, Radiological and Biological Terrorism

Appendix D: p 19 Animal Holding Facilities

Appendix E: p 20 Emergency Utility Disaster Plan

Appendix F: p 22 Pandemic Influenza Action Plan

Appendix G: p 29 Emergency Notification Systems

Appendix H: p 31 Useful Contact Numbers

Appendix I: p 32 Campus Maps

Appendix J: p 34 Building Information

The University of Oklahoma Emergency Response Plan

Emergency planning and emergency response will be an evolutionary process adapting to the nature of the emergency at hand. The intent of this Emergency Response Plan is to set out a foundation from which the University's emergency response may evolve and an organization that may direct its evolution.

This plan was developed using information from a variety of emergency plans, particularly the Cornell University Emergency Plan.

Introduction

Response to, and recovery from emergencies will be conducted within the framework of the University of Oklahoma Emergency Response Plan. The plan is designed to provide effective coordination of University and community resources to protect life and property during and after emergencies. The plan lays the foundation for the University's response to emergencies. These emergencies may include prolonged power outages, extreme weather, fires, hazardous materials incidents, large-scale events, and protest actions.

Plan Purpose

The purpose of the University Emergency Response Plan is to protect lives, intellectual property and facilities. Through increased coordination and preparedness, the University hopes to minimize the impacts of emergencies and to maximize the effectiveness of the campus community in responding to and recovering from major emergencies and catastrophic occurrences. Importantly, the plan provides an organizational structure for the continuity of campus operations in pursuit of the University's academic mission.

Activation of the Emergency Response Plan/Emergency Organization

The Emergency Response Plan and the Emergency Organization established herein can be activated by any University employee witnessing an emergency/catastrophic event or having received credible reports of the emergency/catastrophic event at the University. The Plan can be activated by calling the OU Department of Public Safety (OUDPS) at 325-2864. The OUDPS receives the report, considers/confirms its credibility and then utilizes the phone tree entitled "Executive Emergency Notification Procedures" (Appendix A) to begin the implementation of the University Emergency Response Plan. An Emergency Policy Executive may trigger consideration of an emergency by utilizing the phone tree "Executive Emergency Notification Procedures". The resulting notification system will allow the President and/or other available senior officers of the University to activate the University Emergency Response Plan. Once activated, the Emergency Organization outlined in this Emergency Response Plan will be implemented.

Upon Activation of the Plan / Establishing the Command Center

Upon receiving notification of an emergency, those officers listed among the Emergency Policy Executives should proceed to the Command Center at Whitehand Hall room 201, in the northwest corner of the building on the second floor (the room looks out at Boyd House/University Blvd). (Keys to the Command Center have been distributed to a number of Executives to ensure that the room will be open,

telephones are located in room 218). Should Whitehand Hall be affected by the disaster, the Emergency Policy Executives should report to the President's Office, located on the ground floor/first floor of Evans Hall. If one or both facilities listed above have been lost, or are similarly affected by the emergency, the Command Center location will be given via the phone tree entitled "Executive Emergency Notification Procedures."

The Emergency Management Team should report directly to the site of the emergency (or at a safe distance).

The Emergency Action Team should report to the Command Center. Notification of the Emergency Action team shall take place via a phone tree that will be included as an addendum to the phone tree entitled "Executive Emergency Notification Procedures."

Emergency Organization

The University of Oklahoma Emergency Response Plan Organization consists of three groups:

1. Emergency Policy Executives
2. Emergency Management Team
3. Emergency Action Team

Emergency Policy Executives

This group, led by the University President, has the ultimate responsibility for leading and guiding the University's emergency response effort. During an emergency, the Emergency Policy Executives are kept updated by the Emergency Management Team. With information received from the Emergency Management Team, the Emergency Policy Executives make all emergency-related policy decisions.

Emergency Management Team

The University of Oklahoma Emergency Response Plan establishes an Emergency Management Team that assesses the scope of an incident/situation and advises the Emergency Policy Executives. The Emergency Management Team arrives at the emergency and implements preliminary University responses and tactics, and initiates the recovery process by whatever means are available on the scene. The Emergency Management Team Leader is selected by the team, on an ad-hoc basis, depending on the nature of the specific emergency situation. Depending on the duration of the emergency, it may also be necessary for the Emergency Management Team to establish a command post at the scene of the emergency.

The Emergency Management Team's initial responses and actions are guided by the University's desire to protect human lives first. Only after these efforts should the University's Emergency Management Team seek to protect research animals, plants, intellectual property, equipment and facilities.

Emergency Action Team

The Emergency Action Team consists of four University employees who will provide administrative support to the Emergency Policy Executives. One member of the Emergency Action team should be from the President's staff. One member will be from the Provost's staff. Two members will be from the Department of Public Affairs.

These employees will be permanently assigned to this role on an ongoing basis and will understand that they will be called upon in the event of an emergency. The notification of these employees at the time of an emergency will take place via the phone tree attached to this Plan.

Emergency Occurrence During Non-working Hours

There is a significant chance an emergency may occur outside regular University office hours. While the structure of this plan remains precisely the same, its implementation may vary depending upon available resources and workforce until the proper officials can be notified. Until that time, however, the individuals assuming the most responsibility will be those officials/individuals of highest rank who are available at the time. These individuals should seek to follow as nearly as possible, the guidelines of the plan while simultaneously making an effort to notify OU officers of the situation so as to obtain verification or advice on their actions.

Public Information/News Media

The University of Oklahoma recognizes its responsibility to provide accurate and timely information to the campus community and the public during emergencies. The University also recognizes its responsibility to students, faculty and staff to respond to concerns about personal safety and security, and to follow University policies concerning the release of personal information. During emergencies, information will be provided to the campus community through a variety of methods, including announcements in the news media, e-mail, postings on the University's web site, telephone trees and meetings.

Emergency Policy Executives

President: Responsible for establishing the basic policies that govern the campus Emergency Organization and activates the Emergency Response Plan when necessary. The President is the highest level of authority during an emergency.

Provost: Responsible for all academic issues that surface during an emergency. Helps ensure that the Emergency Organization performs according to established procedures and advises the President. Further responsible for the relocation, suspension and resumption of classes.

Executive Vice President and VP for Administration and Finance: Is primarily responsible for ensuring that the Emergency Organization performs according to established procedures. Responsible for all business and financial issues that surface during an emergency. Helps ensure that the Emergency Organization performs according to established procedures and advises the President. When applicable, notifies key state officials, including FEMA.

Vice President and General Counsel: Counsels the Executive Policy Group regarding legal issues that arise during an emergency. Helps ensure that the Emergency Organization performs according to established procedures and advises the President.

Director, Architectural and Engineering Services: Identifies and contacts architectural and engineering professionals who may aid the Emergency Management Team in the assessment, inspection and closing of damaged campus buildings.

Associate Vice President and Chief Human Resources Officer: Responsible for all issues that relate to University employees. These include establishing a campus resource directory of employees with technical and specialized skills who could be called upon to provide assistance during an emergency.

Vice President for Student Affairs and Dean of Students: Responsible for all activities relating to student life. This includes the identification and provision of temporary housing and food services. Works closely with Public Affairs and Legal Counsel as the liaison to families concerning the welfare of students.

Vice President for University Governance: Serves as the liaison between the Emergency Policy Executives and the University Board of Regents, ensuring that the Regents are informed regarding the emergency and the University's emergency response. In applicable situations, notifies the OSRHE and provides appropriate information.

Vice President for University Outreach: Responsible for advising the Emergency Executive Policy Group on issues pertaining to the operations of the College of Continuing Education, its conferences, facilities, resources and campus visitors who may have skills that could aid in the emergency response efforts.

Vice President for Development: Helps ensure that the Emergency Organization performs according to established procedures and advises the President.

Associate Vice President for Administration and Finance and Chief Financial Officer: Responsible for emergency accounting and disbursement procedures. This includes the development of expenditure documentation procedures to fulfill requirements for potential disaster relief aid from state and federal governments.

Chief Information Officer and Vice President for Information Technology: Responsible for all matters related to the campus telephone system, campus data network and computer and information systems.

Vice President for Public Affairs: Responsible for emergency communications plan to collect accurate information and present it in an organized way to the campus community (including such information that is pertinent to the OUHSC and OU-Tulsa), government officials, the public and news media. This includes the establishment of information hot lines and other means of communicating emergency instructions and information to the University community and the public.

Vice President for Research: Responsible for advising the Emergency Executive Policy Group particularly on matters that may involve efforts to preserve integrity of facilities and research results as it relates to University research programs.

Vice President for Technology Development: Responsible for advising the Emergency Executive Policy Group particularly on matters that may involve efforts to preserve intellectual property as it relates to University research programs.

Emergency Management Team:

Director of Public Safety: Directs the campus emergency response undertaken by both internal and external public safety officials. Provides the Executive Policy Group with current information on the status of the emergency response. Assigns available public safety personnel to assist with the search and closing of damaged campus buildings and the evacuation of the campus community. Further assigns personnel to protect critical facilities and supplies and to provide traffic and crowd control in support of campus closure plans.

Associate Vice President for Administration and Finance and Director, Physical Plant:

Responsible for the recovery process involving the University's physical assets. Prioritizes salvage operations. Establishes target date on which use of buildings/other physical assets will be restored. Establishes community mutual aid agreements with utilities and other organizations that may be able to assist the University in the above-mentioned efforts. Coordinates the collection of information to determine the severity of damage caused by the emergency. Makes provisions for temporary utilities service. Assists OUDPS with the search and closing of damaged campus buildings. Conducts inspection of campus facilities, emergency construction or repairs, and debris clearance from roadways. Provides for the delivery of two-way radios to the Command Center.

Director, Goddard Health Center: Assists primary emergency medical services to minimize the loss of life, subsequent disability, and human suffering by ensuring timely and coordinated medical assistance. Facilitates medical assistance for rescue operations. Coordinates the Coroner Operation.

University Press Secretary: Collects information about ongoing emergency and directs it to the Emergency Policy Executives primarily to the President and the Vice President for Public Affairs. Coordinates press statements made by President. Closely coordinates with President and Vice President for Public Affairs regarding all University press actions.

Director of Risk Management: Coordinates and provides campus liaison to insurance vendor response. Assists in identifying recovery resources. Provides assistance in completing insurance claim forms.

Director of Purchasing: Establishes a process and an emergency procurement organization to ensure the procurement of essential materials and services to support all the Emergency Representatives.

Emergency Responsibilities: Function Areas Listed Alphabetically

Cost Recovery from Insurance:

Department: Risk Management

Responsibilities: Coordinates and provides campus liaison to insurance vendor response. Assists in identifying recovery resources. Provides assistance in completing insurance claim forms.

Contact Information:

Personnel: Mike Montgomery, Director

Telephone: 325-5145 office

Location: NEL, room 112, (across from Student Union)

Counseling Services:

Department: Counseling and Testing Services

Responsibilities: Directs the provision of psychological assistance.

Contact Information:

Personnel: Will Wayne, Director

Telephone: 325-2700 office

Personnel: Michael Daves, Associate Director

Location: Goddard Health Center 201/ (on Elm Street)

Damage Assessment:

Department: Architectural and Engineering Services/Physical Plant

Responsibilities: Directs building inspectors to check damage.

Contact Information:

Personnel: Mike Moorman, Director

Telephone: 325-6006 office

Location: Cross Center D

Personnel: Bill Henwood, Director

Telephone: 325-6211 office

Location: Physical Plant Complex, Northeast area of campus

Documentation (Visual):

Department: Public Affairs

Responsibilities: Documentation for insurance claims.

Contact Information:

Personnel: Catherine Bishop, Vice President

Telephone: 325-1543 office

Location: Whitehand Hall, Boyd Street

Emergency Medical Facilities:

Department: Goddard Health Center

Responsibilities: Assists primary emergency medical services by establishing temporary emergency medical facilities for treatment of sick and injured individuals.

Contact Information:

Personnel: Will Wayne, Director

Telephone: 325-4611 office

Location: Elm Street (West side of campus)

Emergency Medical Services:

Department: Goddard Health Center

Responsibilities: Primary emergency medical services are provided by local fire departments and ambulances. Goddard assists primary emergency medical services by coordinating University emergency medical response efforts and supports fire department and ambulance emergency response.

Contact Information:

Personnel: Will Wayne, Director

Telephone: 325-4611 office

Location: Elm Street (west side of campus)

Environmental Health and Safety:

Department: Environmental Health & Safety Office (Office of Compliance)

Responsibilities: Evaluates the status and condition of chemical and biological materials. Directs University efforts to control hazardous materials and supports fire department efforts to control hazardous materials.

Contact Information:

Personnel: Trenton Brown

Telephone: 325-5147 office

Location: Parkway South, Suite 202

Evacuation:

Department: OU Department of Public Safety

Responsibilities: Evacuates people from hazardous high-risk areas.

Contact Information:

Personnel: Liz Woollen, Director

Telephone: 325-2864, 325-5141 office

Location: 2775 Monitor, South Campus

Fire Control:

Department: Risk Management

Responsibilities: Primary fire suppression is provided by local fire departments. The Fire Marshal coordinates University fire suppression efforts and supports fire department fire suppression efforts and is responsible for fire investigations. Directs University efforts in fire and life safety.

Contact Information:

Personnel: Kevin Leach

Telephone: 325-0545 office

Location: NEL 109 A, across from Student Union

Food Services – Campus:

Department: Food Service

Responsibilities: Maintains food service at campus dining facilities.

Contact Information:

Personnel: Charles Weaver, Director

Telephone: 325-6851, 325-6147 office

Location: Walker Center 126

Hazardous Materials (Chemical and Biological):

Department: Environmental Health & Safety Office (Office of Compliance)

Responsibilities: Evaluates the status and condition of chemical and biological materials. Directs University efforts to control hazardous materials and supports police and fire departments efforts to control hazardous materials.

Contact Information:

Personnel: Trenton Brown

Telephone: 325-5147 office

Location: Parkway South, Suite 202

Hazardous Materials (Radioactive):

Department: Radiation Safety Office (Office of Compliance)

Responsibilities: Evaluates the status and condition of radioactive materials. Directs University efforts to control radioactive materials and supports police and fire departments efforts to control radioactive materials.

Contact Information:

Personnel: Dick Trim

Telephone: 325-0820 office

Location: Parkway South, Suite 202

Housing – Students:

Department: Housing and Food Services

Responsibilities: Handles relocation of students in campus residence halls and apartments.

Contact Information:

Personnel: Dave Annis, Director

Telephone: 325-2300 office

Location: Walker Center 126

Housing – Emergency:

Department: Red Cross

Responsibilities: Sets up emergency shelters for evacuees and others who may be homeless following the emergency.

Contact Information:

Telephone: 321-0591

Location: 1205 Halley Avenue, Norman, OK.

Law Enforcement:

Department: Oklahoma University Police Department
Responsibilities: Directs law enforcement resources for traffic, access and security control.

Contact Information:

Personnel: Liz Woollen, Chief
Duncan Burgess, Captain
Telephone: 325-2864, 325-5140, 325-5141 office
Location: 2775 Monitor, South Campus

Public Information:

Department: Public Affairs
Responsibilities: Serves as a member of the central Emergency Policy Executive Team.

Contact Information:

Personnel: Catherine Bishop, Vice President
Telephone: 325-1543 office
Location: Whitehand Hall

Purchasing:

Department: Purchasing Services
Responsibilities: Handles emergency purchases, coordinates distribution of supplies.

Contact Information:

Personnel: Jean Wilson, Associate Director
Telephone: 325-6723 office
Location: 2750 Venture Drive, Norman OK

Repairs:

Department: Physical Plant
Responsibilities: Directs crews to clear debris and make temporary restorations.

Contact Information:

Personnel: Bill Henwood, Director
Telephone: 325-6211 office
Location: Physical Plant Complex, Northeast area of campus

Safety – Environmental:

Department: Environmental Health & Safety Office (Office of Compliance)
Responsibilities: Evaluates University facilities and properties for hazards and determines habitability. Evaluates the safety of emergency operations and determines the need to modify or suspend those operations.

Contact Information:

Personnel: Trenton H. Brown
Telephone: 325-5147 office
Location: Parkway south, Suite 202

Search and Rescue:

Department: Oklahoma University Police Department
Responsibilities: Primary search and rescue is provided by local fire departments. OUDPS coordinates University search and rescue efforts and supports fire department search and rescue efforts.

Contact Information:

Personnel: Liz Woollen, Chief
Duncan Burgess Captain
Telephone: 325-5141, 325-5140 office
Location: 2775 Monitor, South Campus

Shelters – (see Housing)**Telephone Service:**

Department: Telecommunications
Responsibilities: Coordinates the restoration of phone service.

Contact Information:

Personnel: James Williams, IT Analyst III
Telephone: 325-8888
Personnel: Nate Wahlmeier
Telephone: 325-4357
Location: Nuclear Engineering Lab 128, (across from Student Union).

Transportation:

Department: Parking and Transit Services
Responsibilities: Provides emergency transportation. Adjusts existing transportation organization in order to serve post-emergency environment.

Contact Information:

Personnel: Theta Dempsey, Director
Telephone: 325-2046 office
Location: Robertson Hall 304, on Elm Street West of Campus
Personnel: Wayne Wickham
Telephone: 325-2278 office
Location: 510 E. Chesapeake, South Campus

Utilities:

Department: Physical Plant
Responsibilities: Restores essential utilities.

Contact Information:

Personnel: Bill Henwood, Director
Telephone: 325-6211 office
Location: Physical Plant Complex, Northeast area of campus

Volunteer Force:

Department: Student Affairs, Coordinator of Volunteer Programs
Responsibilities: Organizes volunteers for operational use.

Contact Information:

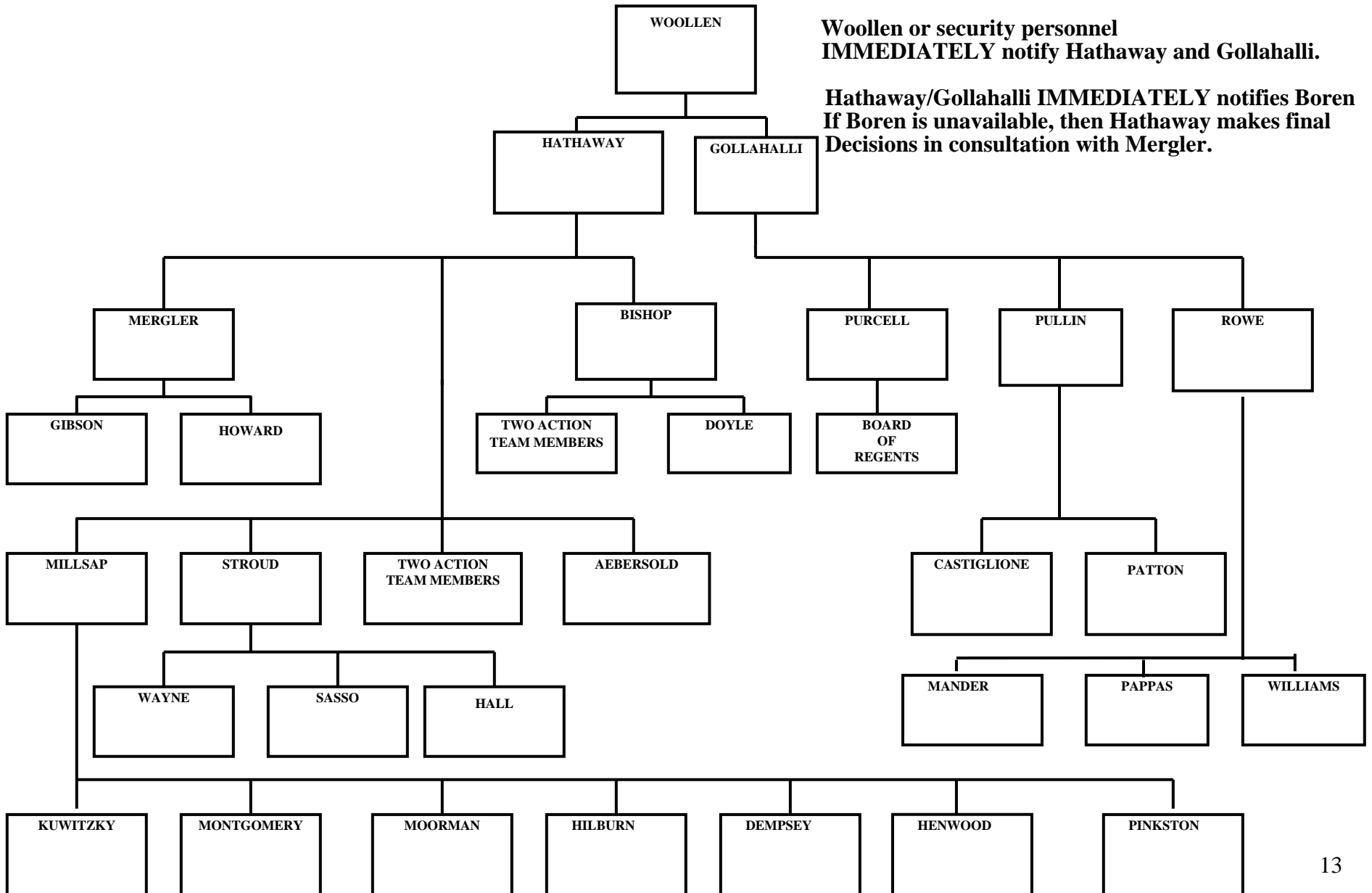
Personnel: Susan Sasso, Assoc. Vice Pres. of Student Affairs
Telephone: 325-3161 office
Location: Oklahoma Memorial Union

Appendix A: Executive Emergency Notification Phone Tree

01/01/2009

Woollen or security personnel
IMMEDIATELY notify Hathaway and Gollahalli.

Hathaway/Gollahalli IMMEDIATELY notifies Boren
If Boren is unavailable, then Hathaway makes final
Decisions in consultation with Mergler.



Appendix B: Tornados

Since Oklahoma weather can be severe and difficult to predict, it is important to keep abreast of the weather outside and the 24-hour forecast.

A tornado is destructive when it descends to earth, where its path may vary from 50 yards to one mile in width. Wind speed inside a tornado can reach up to 300 mph. Its forward speed will average 25 to 40 miles per hour.

The following instructions for different areas and situations should be studied:

If you are in the open:

- Move at right angles to the tornado
- Attempt to reach a protective area, such as a building with a basement
- If there is not time to escape or find a suitable protective area, lie flat in a ditch or depression, avoiding areas subject to rapid water accumulation or flooding in heavy rains.

If you are in class:

The instructor will dismiss the class immediately, after advising students to proceed to a lower level hallway or basement of the building or to the nearest substantially constructed building if the facility being used is not suitable as a protective area.

If you are attending a university function:

The function will be terminated at once, and the participants will be advised promptly to seek a protective area on the ground floor away from glass or in the basement of the building. If the function is being held in a gymnasium, or cafeteria, the area should be evacuated immediately and the occupants instructed to proceed to the nearest substantially constructed building.

TORNADO SIRENS

The city of Norman maintains a citywide outdoor warning siren network that is used to signal imminent danger from tornadoes. It is a familiar sound, as it is tested every Friday at noon, including cloudy and rainy Fridays, unless there is a threat of severe weather in the area, or when temperatures are substantially below freezing.

A steady siren for three to five minutes means **IMMINENT DANGER**. Take shelter immediately in the nearest suitable protective area. Protective areas should be identified in advance. *Once the sirens sound, it is too late to seek protection at a remote location.*

An "all clear" signal will **NOT** be given via the siren system. It is urged that reliance be placed on the broadcast media for this and other status and forecast information.

Outside the Norman area, check with local authorities for information about what a "siren system" signal means (if one is used), and whether or not an all clear signal will be given by siren.

WEATHER ADVISORIES (AND ALL-CLEAR SIGNALS)

The National Weather Service broadcast continuous weather status and forecast information on a special frequency of **162.400 MHZ** from its Norman office; this information is updated hourly. In addition, the NWS will broadcast special alert tones and messages for tornado warnings, flash flood warnings and similar impending weather emergencies.

(WEATHER ADVISORIES AND ALL-CLEAR SIGNALS - Continued)

Special radio receivers are available for purchase to monitor this frequency and receive the special alert warnings. Those persons or offices requiring current, official weather information or desiring to take advantage of the alert warning service should check with a radio equipment dealer for further information.

It is recommended that all persons maintain a **battery-operated AM and/or FM transistor radio** and **take that radio with them** should it become necessary to seek a protective area from a tornado or other severe storm.

Persons in protective areas should **not** rely on visual observations of local conditions as a reliable indicator of the true status of the weather, since hail and tornadoes have been known to occur under apparently clear-sky conditions.

Local AM/FM Radio Stations

Radio stations which may carry local weather advisories
(and forward *all-clear* information):

- KGOU, 106.3 FM, OU-Norman
- KREF, 1400 AM, Norman
- KKNG, 93.3 FM, Moore
- KOMA, 1520 AM, Oklahoma City
- KTOK, 1000 AM, Oklahoma City

CAMPUS PROTECTIVE AREAS

Protective areas from a tornado may be sought in buildings of substantial masonry construction; most University facilities have spaces that may be used as protective areas. These protective areas can usually be found in interior spaces or hallways away from exterior walls and windows.

Once the sirens sound, it is *too late* to proceed to a remote protective area. Residents should stay alert to developing severe weather and have identified a suitable protective area beforehand.

The lowest level of the building should be used, avoiding spaces with glass surfaces on any outside wall; doors can usually be arranged to augment protection.

Buildings of frame construction and those with broad, flat roofs or large open interior spaces (*such as auditoriums, cafeterias, or gymnasiums*) **should not be used** or considered as protective areas. Many such areas, however, have *adjacent* service spaces (*such as corridors, walk-in coolers, or showers*) which are reasonably safe.

RESIDENCE HALLS and UNIVERSITY APARTMENT CENTERS

Suitable protective areas have been identified within each university housing center. To protect persons using these spaces against airborne debris, particularly glass and wood splinters, **all doors opening into the protective spaces should be closed while in use for a severe weather protective area.**

OU Housing staff provides residents with annual severe weather safety training/information and OU housing centers maintain/monitor NOAA S.A.M.E. weather radios. Residents with questions regarding severe weather emergency procedures or designated protective areas in their housing center should contact their building staff or *OU Housing and Food Services*, 325-2511.

Sooner Suites —Take cover in the bathroom or center hallway in each suite. Cover yourself with any available padding such as blankets and comforters.

CHILD-CARE CENTERS

Because severe weather, including tornadoes, is often preceded by extended heavy rainfall accompanied by strong winds, taking young children outdoors to an alternate facility is potentially hazardous and therefore inadvisable.

To avoid this undesirable exposure, the best available protective area has been identified on the premises of each of the on-campus child-care facilities. Arrangements have been made for the University Police to alert management at each on-campus child-care facility of developing severe weather. OUPD has communicated with management about emergency actions and cautioned that doors in protective areas should be arranged to protect against airborne debris, particularly glass and wood splinters.

UNIVERSITY RESEARCH CAMPUS – NORTH

In buildings of substantial masonry construction, ground floor corridors having no direct exposure to exterior windows with doors closed offer adequate protection.

In frame structures, small windowless interior spaces such as closets or restrooms on the ground floor offer the best available protective area. Doors should be arranged to protect against airborne debris, particularly glass and wood splinters. Avoid seeking protection/shelter in large open structures such as hangars.

OFF-CAMPUS Public Shelter:

The *City of Norman* makes a limited amount of shelter space available for people who are not already in substantial buildings, such as those living in mobile homes. Those shelters are:

- Irving Recreation Center - 1920 Alameda
 - Whittier Recreation Center - 2000 W. Brooks
 - Cleveland Elementary School - 500 N. Sherry
 - Little Axe High School - 1306 168th Ave. NE
-

THUNDERSTORM SAFETY

More people are killed in the U.S. by lightning each year than by tornadoes and hurricanes.

Lightning Safety Rules:

- Postpone outdoor activities if thunderstorms are imminent. This is your best way to avoid being caught in a dangerous situation.
 - Move to a sturdy building or car. Do not take shelter in small sheds, under isolated trees, or in convertible automobiles. Stay away from tall objects such as towers, fences, telephone poles, and power lines.
 - If lightning is occurring and a sturdy shelter is not available, get inside a hard top automobile and keep the windows up. Avoid touching any metal.
 - Utility lines and metal pipes can conduct electricity. Unplug appliances not necessary for obtaining weather information. Avoid using the telephone or any electrical appliances. Use phones **ONLY** in an emergency. Turn off air conditioners. Power surges from lightning can cause serious damage.
 - Do not take a bath or shower during a thunderstorm.
 - If you're caught outdoors, and no shelter is nearby, find a low spot away from trees, fences, and poles. Make sure the place you pick is not subject to flooding. If you are in the woods, take shelter under the shorter trees. If you are boating or swimming, get to land and find shelter immediately!
-

National Weather Service (NWS) Terminology

Severe Thunderstorm: A thunderstorm which produces tornadoes, wind gusts of 50 knots (*58mph*) or greater and/or hail three-quarters of an inch in diameter or larger.

Tornado: A violently rotating column of air in contact with the ground and extending from the base of a thunderstorm.

Debris Cloud: A rotating "cloud" of dust or debris, near or on the ground, often appearing beneath a condensation funnel and surrounding the base of a tornado. A debris cloud beneath a thunderstorm is all that is needed to confirm the presence of a tornado, even in the total absence of a condensation funnel.

Funnel Cloud: A condensation funnel extending downward from the cloud-base but **NOT** touching the ground or creating a debris cloud. (*A "funnel cloud" is NOT a "tornado".*)

Tornado or Severe Thunderstorm Watch: Issued by the NWS as a precautionary alert when conditions are favorable for the development of tornadoes or severe thunderstorms in and close to the watch area.

Tornado or Severe Thunderstorm Warning: Issued when a tornado has been sighted by storm spotters or detected by radar or when a thunderstorm produces three-quarter inch (*or larger*) hail and/or winds of 58 mph or greater. Information in this warning includes: the storm location, towns that will be affected, and the primary threat associated with the storm. **NOTE: WARNING AREA residents should take immediate safety precautions.**

Appendix C: Chemical, Radiological and Biological Terrorism

Primary University Contacts:

Trenton Brown at Environmental Health & Safety Office (Office of Compliance) 325-5147 office
Dick Trim at Radiation Safety Office (Office of Compliance) 325-0820 office
Will Wayne at Goddard Health Center 325-2700 office

These officials should immediately contact Nick Hathaway (325-3916) or
Anil Gollahalli (325-4124)

CDC Instructions:

According to the national Center for Disease Control, the recommended notification procedures for local leaders in the event of a bioterrorist incident reads as follows;

- 1) Inform your local health officer.

Contact: Shari Kinney, Cleveland County Health Department Administrative Director
Telephone: 321-4048.

- 2) Notify the FBI

Contact: FBI Terrorism Task Force
Telephone: 290-7770

- 3) Notify Local Law Enforcement

A) Agency: Norman EMSTAT
Responsibilities: initial treatment and field decontamination of individuals
Contact: Eddie Sims 307-1560, Crew Chief 307-1561,
Norman Police Dispatch 321-1444

B) Agency: Norman Fire Department
Responsibilities: scene decontamination
Telephone: 292-9780

- 4) Notify and Involve State Health Department Officials

Contact: Rocky McElvany, Commissioner of the Oklahoma State Department of Health
Telephone: 271-4200

- 5) The State Health Department notifies the national Center for Disease Control (CDC)

Appendix D: Animal Holding Facilities

Laboratory Animal Research Director: William Shelton
325-1058 office

<u>Building Name</u>	<u>Building Number</u>	<u>Room(s)</u>
Animal House	063	First Floor
Dale Hall	072	12, 13, 42
Felgar Hall	088	133a
George L. Cross	062	906, 907, 908, 913
Insectary	064	110
Physical Sciences	018	414a, 414f, 414g, 414h
Richards Hall	058	410c, 412

Appendix E: Emergency Utility Disaster Plan

In case of a disaster to any of the utility systems, this plan has been devised to assist University administration in recovery from emergency and return to normal of all utility systems. Utility systems covered by this emergency response plan are the electrical, natural gas, steam, domestic water, and chiller systems. An emergency is defined as a loss of a major portion of any of the listed utilities. For individual building outages, Physical Plant Work Authorization should be notified. In that case, Work Authorization will coordinate recovery operations.

For an emergency to any of the above systems, the first contact person is William Davis, Assistant Director (utilities) for Physical Plant. If he is unavailable, then the Power Plant Manager, Kim Nixon, will fill the duties of first contact person. Duties of Assistant Director (utilities) for Physical Plant are listed below:

1. As soon as the situation is stable, the Assistant Director (utilities) for Physical Plant will contact the Physical Plant Director, Bill Henwood, and inform him of the nature of the emergency, action taken, and expected duration until return to normal.
2. The Assistant Director (utilities) for Physical Plant will contact and coordinate recovery efforts with the Physical Plant's Assistant Director for Engineering and Systems Operations, Don Carter, or, in his absence, his designated stand-in.
3. The Assistant Director (utilities) for Physical Plant will contact the Manager of Accounting and Logistics, Cyndi Byars, and relay all pertinent information to Work Authorization who will handle secondary communications and coordination and will provide assistance as required.

Contact Numbers for Physical Plant:

Bill Henwood	Office	325-6211
William Davis - Utilities	Office	325-3780
Kim Nixon	Office	325-4601
Don Carter – Engineering And Systems Operations	Office	325-5457
Cyndi Byars	Office	325-6312

In the event that many or all of the above management staff is unable to assist in the emergency, then the following contact persons, not directly associated with the University, could be called upon to assist. These contacts, outside of University staff, have the most knowledge of the University utility systems.

Utility Providers:

OG&E	Kent Walker	553-4444
ONG Operations Superintendent	Jim Zneck Jay Sullivan	366-2451 366-2455
Oklahoma Energy	George Taubel	918-254-9630

Engineering Services:

Frankfurt Short Bruza	Gary James	840-2931
C. H. Guernsey Engineering	Richard Hinkle	
ZRHD Engineering	Randy Ragsdale Randy Carter	942-8475 610-6590, 366-0069
Kirkpatrick, Forest, Curtis, Inc.	Larry Curtis Rick Forest	528-4596

Rental/Material Acquisition:

Aggreko Rental	Allen Stone	330-1341
Southwest Electric	Steve White	364-4445
Trane Company	Rhonda Going	1-800-826-4348
York Company	Bert Akins	947-6502

Construction Assistance:

United Mechanical	Rod Rutherford	528-1234
Shawver Electric	Robert Danner	525-9451
Flintco, Inc.	Tom Heffernan	670-6307

Appendix F: Pandemic Influenza Action Plan

OVERVIEW

Each winter the U.S. experiences some degree of influenza epidemic. Even though there may be a sufficient supply of vaccine, the mortality rate averages 36,000 each year. A pandemic (global) disease outbreak of a new influenza A virus could cause major health care, economic and social disruptions with deaths estimated at 89,000 to 207,000 in the U.S. alone. The emergence of avian H5N1 “bird flu”, first recognized in 1997 in Hong Kong, makes preparedness for an influenza pandemic increasingly important.

The Department of Health and Human Services (HHS) and Centers for Disease Control (CDC) are assisting colleges and universities in their pandemic planning efforts by providing information and resources for use in planning and responding to an influenza pandemic. The University of Oklahoma has begun increasing its preparedness by utilizing the *Colleges and Universities Pandemic Influenza Planning Checklist* provided by the HHS/CDC. This checklist outlines areas of planning and coordination, continuity of student learning and operations, infection control policies and procedures, and communications planning. By using this checklist in conjunction with existing plans and as a template for pandemic response, the University community will be able to effectively manage and recover from a pandemic.

The University of Oklahoma *Pandemic Influenza Action Plan* (Action Plan) establishes a Pandemic Response Team (PRT) and outlines the roles of University administrators and directors in the lead-up to and during a pandemic response. The Action Plan incorporates the University of Oklahoma *Emergency Response Plan* (ERP) and the *Oklahoma Pandemic Influenza Management Plan* (OPIMP) for the most efficient and effective response to an identified outbreak of avian influenza. Resources for team members involved in planning and executing components of this document may be found in the ERP. Additionally, the Action Plan directs cooperation with state and county health care officials and maintains the effective delivery of health services for the University community.

The extent of campus-wide and departmental planning/response activities will be determined by direction from state and local authorities, and the presence or absence of pandemic flu at the regional, state, or local level. This document continues the planning process at a point when no cases of human-to-human transmission have been confirmed in the western hemisphere. The PRT will escalate planning and response as the threat level warrants.

INFLUENZA*

The Pandemic Influenza Committee [an Oklahoma State Department of Health committee] developed a management plan to address the public health response to a pandemic influenza event pursuant to recent novel virus alerts. In the past 300 years, there have been 10 documented pandemics of influenza A. The infamous “Spanish flu” of 1918-1919 resulted in 20 to 50 million deaths worldwide in a much less mobile society. The mortality rate during the more recent pandemics (in 1957 and 1968) was relatively low despite the high morbidity. Although supportive medical care and the availability of antibiotic therapy for secondary bacterial infections are factors to explain the “milder blow” of later pandemics, the causative influenza virus strains were less virulent. If a novel influenza strain emerges that is highly virulent, the rate of illness and death could rival previous pandemics despite modern

healthcare technology. Beyond the human toll, an influenza pandemic will create significant social disruption and economic impact. The Centers for Disease Control and Prevention (CDC) estimate that the economic losses associated with future pandemics will total billions of dollars.

Influenza viruses have the ability to mutate, which can lead to genetic sequence realignment or reassortment. There are two main types of influenza virus mutation: antigenic drift and antigenic shift. Antigenic drift is a minor change that occurs frequently and causes the emergence of a new strain within a subtype. Antigenic drifts occur in both type A and B influenza viruses. The reason the composition of the annual influenza vaccine changes from year to year is due to antigenic drift. Antigenic shift is a major change caused by genetic recombination that results in the emergence of a novel virus strain that has not previously infected humans. Often, antigenic shift occurs in an animal influenza virus, which then allows the virus to be transmitted between animals and people. Antigenic shift occurs only in influenza type A viruses.

A real world threat for the next potential pandemic is the avian influenza H5N1 strain. This highly pathogenic avian influenza virus was first recognized in Hong Kong in 1997. Although aggressive measures were used in an attempt to eradicate bird reservoirs of the virus, there have been an increasing number and severity of recurrent poultry outbreaks in Asia. More troubling is the occurrence of bird-to-human transmission of the virus observed in three countries with a sobering case fatality rate of 55%. The *New England Journal of Medicine* [sic] recently published a report that provided strong clinical and epidemiologic evidence of H5N1 being transmitted from human-to-human in a limited familial case cluster. This is especially alarming and fuels the global concern that the next influenza pandemic is imminent.

If the next pandemic influenza strain mimics the virulence of the 1918 pandemic strain, the World Health Organization (WHO) estimates that there could be 1.7 million deaths in the United States and 180 to 360 million deaths worldwide. These statistics seem overwhelming, but there are measures that can be taken now to mitigate the impact of the event.

Many factors must be considered when estimating the potential impact of the next influenza pandemic. Some of these include the virulence of the circulating virus, how rapidly the virus spreads, primary age group affected, and the effectiveness of public health intervention and response. Nonetheless, estimates of the health and economic impact can help direct medical response plans and guide public health policy decisions.

During a normal influenza season, 5-20% of the population becomes ill and the highest rates of influenza-related complications occur in very young children and the elderly. During severe epidemics, the attack rate may be as high as 30-50% with a larger proportion of serious illness and deaths occurring in adults less than 65 years old. During the 1918 pandemic, young adults had the highest mortality rates, with nearly one-half the influenza-related deaths in those 20-40 years old.

**Excerpts from the OSDH Pandemic Influenza Management Plan.*

ROLE OF THE FEDERAL GOVERNMENT

The *Oklahoma Pandemic Influenza Plan*, prepared by the Oklahoma State Department of Health Pandemic Influenza Management Plan Committee, outlines the roles of federal government and state and county health services in one document with the goal of minimizing societal and infrastructure disruptions for the citizens of Oklahoma.

The *National Strategy for Pandemic Influenza*, issued by President Bush November 1, 2005, guides our nation's preparedness and response to an influenza pandemic, with the intent of:

- Stopping, slowing or otherwise limiting the spread of a pandemic to the United States.
- Limiting the domestic spread of a pandemic, and mitigating disease, suffering and death.
- Sustaining infrastructure and mitigating impact to the economy and the functioning of society.

The *Strategy* charges the U.S. Department of Health & Human Services (HHS) with leading the federal pandemic preparedness³.

The HHS *Pandemic Influenza Plan* is a blueprint for pandemic influenza preparation and response. In particular, the *HHS Plan* provides guidance to national, state, and local policy makers and health departments. The goal is for all involved to achieve a state of readiness and quick response.

The Federal Government will:

- Coordinate national and international surveillance.
- Conduct epidemiological investigations in the U.S. and globally.
- Develop and direct use of diagnostic laboratory tests and reagents.
- Develop reference strains and reagents for vaccines.
- Evaluate and license vaccines.
- Determine populations at highest risk and strategies for vaccination and antiviral use.
- Assess and advise on measures to decrease transmission (such as travel restrictions, isolation, and quarantine).
- Deploy federally purchased vaccine.
- Deploy antiviral agents in the Strategic National Stockpile.
- Evaluate the efficacy of response measures.
- Deploy the Commissioned Corps Readiness Force and Epidemic Intelligence Service Officers.
- Develop and distribute medical and public health communications.

ROLE OF THE OKLAHOMA STATE DEPARTMENT OF HEALTH

In the event of an influenza pandemic, the Oklahoma State Department of Health (OSDH) will be the lead state agency in the response. State, regional and local organizations will initiate actions outlined in the *Oklahoma Pandemic Influenza Management Plan* and the Catastrophic Health Emergency Plan.

The OPIMP, prepared by the Oklahoma State Department of Health Pandemic Influenza Management Plan Committee, is intended to be dynamic and flexible. It consists of six essential elements of preparedness and response that would be integral in managing a potential influenza pandemic. The six essential elements address:

- Command, Control and Management
- Surveillance
- Delivery of Vaccine
- Delivery of Antiviral Medications
- Emergency Response

- Risk Communication.

The overall goal of the OPIMP is to minimize serious illness and overall deaths and, secondly, to minimize societal and infrastructure disruptions for the citizens of Oklahoma as a result of an influenza pandemic.

The OSDH will:

- Develop, regularly review, and implement the Oklahoma Pandemic Influenza Management Plan.
- Provide laboratory services, including: surveillance activities, viral isolation, antigen detection, and strain identification of influenza viruses.
- Direct and supervise the implementation of the plan components, namely vaccine delivery and antiviral dispensing by the Commissioner of Health and State Health Officer.

ROLE OF THE COUNTY HEALTH DEPARTMENTS

County health departments are responsible for planning and coordinating the local response to an influenza pandemic with direction from OSDH Central Office. Local distribution of vaccines and antivirals will be made by the County Health Departments at the direction of the OSDH. Local County Health Departments, through existing or enhanced surveillance, may be the first to detect influenza activity in their communities.

The County Health Departments will:

- Meet with local key partners and familiarize them with the Oklahoma Pandemic Influenza Management Plan.
- Liaison with local responders (e.g., emergency services, hospitals, and community response).
- Promote inter-pandemic routine influenza and pneumococcal vaccination to designated high-risk groups.
- Develop a plan with key partners that addresses closing and re-opening of schools, businesses, and public events.
- Assure local emergency plans are implemented during an influenza pandemic.
- Assist with disseminating educational materials regarding an influenza response.

ROLE OF OU HEALTH SERVICES

All responses by the University of Oklahoma and OUHS during an influenza outbreak will be subject to the direction of the Oklahoma State and Cleveland County Health Departments (CCHD).

The level of appropriate response to an identified influenza pandemic or identified cases of avian influenza will be determined by the location and size of the outbreak. If a new influenza A virus is identified outside the United States, OUHS staff will monitor reports of the viral spread. If the virus is identified in the U.S., the Director will contact the OSDH for information and keep the OUHS staff and the University community apprised of the situation. If cases of avian influenza are identified within the state or at the local level, the Director will maintain ongoing communication with the OSDH and CCHD for information and instructions. While it is remotely possible but highly unlikely, OUHS could be

presented with an initial avian influenza case. OUHS providers will identify any of their patients with flu-like symptoms who have recently traveled to outbreak locations. When a patient is identified as possibly infected with avian influenza, the provider will follow appropriate protocols, notifying the OSDH epidemiologist and the OUHS Director.

OU Health Services will:

- Conduct surveillance for pandemic influenza in the University community.
- Activate the University of Oklahoma *Emergency Response Plan* as required.
- Coordinate with the Oklahoma State and Cleveland County Health Departments.
- Organize triage and care of influenza patients.
- Establish and staff telephone hotlines.
- Use ancillary staff to relieve healthcare personnel of non-medical duties and activities.
- Implement environmental infection control and personal hygiene strategies.
- Identify and maintain critical supplies to support the response.
- Conduct surveillance for influenza in healthcare personnel.

PLANNING AND COORDINATION

Coordination with state and local public health authorities and University directors and departments will be key to the success of the pandemic planning/response. The Pandemic Coordinators (Assistant Vice President for Student Affairs/Director of OU Health Services) will be charged with maintaining contact with these authorities and providing OU Emergency Policy Executives with necessary information for decision-making regarding containment measures and other matters. For a rapid pandemic response the ERP Executive Notification Tree will be activated as conditions necessitate.

The Pandemic Response Team will consist of the Pandemic Coordinator and a representative from each of the following departments:

Health Services
Executive Affairs
Administration and Finance
Student Affairs
OU Department of Public Safety
Legal Counsel
Public Affairs
Academic Affairs
Housing and Food Services
Information Technology
Physical Plant
Human Resources
University Outreach
Environmental Health and Safety
Risk Management
Athletics Department

These departments will also be asked to prepare departmental plans as the potential for a pandemic increases.

Readiness for a pandemic includes the coordination and planning for issues and scenarios that are found in the university setting. These issues include but are not limited to:

- Cancellation of classes and/or public events.
- Closure of campus, student housing, and/or public transportation.
- Provision of housing for quarantined and/or ill students.
- Contingency plans for students who depend on student housing and food services.
- Contingency plans for maintaining research laboratories.
- Stockpiling equipment and supplies.
- Continuity of health care.
- Campus recovery.
- Pandemic drills as necessary.

CONTINUITY OF STUDENT LEARNING AND OPERATIONS

Two important elements of a pandemic response plan include assuring continuity of instruction and maintenance of essential University operations. The Provost, University administrators, and directors will be called upon by the PRT to identify issues related to classroom instruction as recommended by the CDC in the event of an imminent pandemic where the disruption of classroom instruction, daily University affairs, or even campus closure becomes a possibility.

INFECTION CONTROL POLICIES AND PROCEDURES

Infection control is important for minimizing and/or preventing the transmission of disease. The infection control process is important during a disease outbreak and to prevent or limit the outbreak. OU Health Services will instruct and assist the University community in all aspects of infection control. As part of the OU Emergency Management Team, OUHS will utilize this Action Plan and various resources provided by the CDC in the case of an influenza pandemic.

Human Resources and Academic Affairs will be called upon to develop non-punitive, liberal leave policies for faculty, staff, and students with known or suspected pandemic influenza. The isolation/separation of the ill will be an important part of controlling the pandemic.

The University will also be asked to adopt CDC travel recommendations as the situation warrants. Non-essential employees working in or near pandemic areas may be recalled.

COMMUNICATIONS RESPONSE PLANNING

The University *Emergency Response Plan* will be activated when there is an imminent threat of a pandemic, and Executive Emergency Notification Procedures will proceed as outlined in the ERP.

Information Technology will be instructed to prepare a plan for dissemination of information to the University community during a pandemic. This may include: telephone hotlines, dedicated websites, local radio and/or television.

REFERENCES

The University of Oklahoma, *Emergency Response Plan*, December 2005. Available at: <http://www.ou.edu/aa/erp.pdf>. Accessed July 2006.

Oklahoma State Department of Health. Oklahoma Pandemic Influenza Management Plan. Pandemic Flu Website. Available at: <http://pandemicflu.gov/plan/states/oklahoma.html>

Centers for Disease Control, *Colleges and Universities Pandemic Influenza Planning Checklist*, March 20, 2006, version 2.2. Available at: <http://www.pandemicflu.gov/plan/tab5.html>. Accessed July 2006.

Centers for Disease Control, Pandemic Flu website, Monitoring Outbreaks. Available at: <http://www.pandemicflu.gov/outbreaks/>. Accessed July 2006.

Gensheimer, KF, Meltzer, MI, Postema, AS, Strikas, RA. Influenza Pandemic Preparedness. *Emerg Infect Dis* 2003 Dec. Available from: URL: <http://www.cdc.gov/ncidod/EID/vol9no12/03-0289.htm>

Homeland Security Council. National Strategy for Pandemic Influenza. Pandemic Flu Website. Available at: <http://pandemicflu.gov/plan/tab1.html>

Department of Health and Human Services. HHS Pandemic Influenza Plan. Pandemic Flu Website. Available at: <http://www.hhs.gov/pandemicflu/plan>

Department of Health and Human Services. Colleges and Universities Pandemic Influenza Planning Checklist. Pandemic Flu Website. Available at: <http://pandemicflu.gov/plan/collegeschecklist.html>

Appendix G: Emergency Notification Systems

The University's Emergency Notification Systems are made up of seven vital components, each of which is designed to disseminate information via different avenues. Most situations will require the use of only one, two, or a few of the components. However, certain critical needs will mandate the use of all components in order to assure timely, comprehensive, and overlapping distribution.

1. Emergency Communication System: This component is the primary means of notification to University community in the event of an emergency. It allows the University to rapidly and efficiently provide information to the OU community by contacting students, faculty and staff within minutes by telephone, text messaging, and e-mail using contact information provided. The system is only to be used in the event of an extreme emergency or weather related school closings, or as otherwise designated by the President. Tests of the system are conducted once in the fall semester and once in the spring semester. The President or his designee initiates any and all notifications from the system. The Press Secretary is responsible for assisting the President or his designee in recording the message and disseminating the notification to the OU community.
2. University's Mass Email System: This component distributes information only to campus email addresses. Email is termed "pull" methodology because the user has to get it. For this reason dissemination is generally slower. This component should therefore be operated only for complementary or secondary notification purposes or for non-urgent communications where the information is not time-sensitive. The Office of Public Affairs controls the message and its delivery.
3. University's Web Site: This component can be used to post emergency information (home page at ou.edu). It is not an adequate delivery mechanism for time-critical situations, but it has far-reaching capabilities and is a good method for disseminating text that is informational. These announcements will fall under the direction of the Vice President for Public Affairs.
4. Internal E-mail Distribution Lists and Calling Trees: This component is used by Vice Presidents, Deans and Directors to reach personnel in their areas. It must be kept current at all times.
5. Building Contact Persons: This component keeps current the name, email address, and work phone number of the designated contact person for each building on the Norman Campus. Physical Plant (325-6601) maintains the updated list. The contact person may be called upon to assist in an emergency situation, but **ONLY** if deemed safe. Such a call and instructions would come from public safety officials, the President, the Executive Vice President and Vice President for Administration and Finance, the Senior Vice President and Provost, or the Vice President and General Counsel only.
6. Buildings with Public Address Capabilities: This component comprises the public address systems in those campus buildings that have them. Designated personnel in these buildings may be called upon to deliver voice messages to occupants. Direction to give such a message would issue from the OU Police Department, the President, the Executive Vice President and Vice President for Administration and Finance, the Senior Vice President and Provost, or the Vice President and General Counsel only. An example of a message to be delivered in the event requiring buildings be secured would be: **"ATTENTION, PLEASE. AN UNSAFE CONDITION IS BELIEVED TO EXIST ON CAMPUS REQUIRING BUILDINGS BE SECURED. PLEASE REMAIN IN YOUR ROOMS OR BUILDINGS WITH DOORS LOCKED UNTIL AN 'ALL CLEAR'**

MESSAGE HAS BEEN GIVEN. THE UNIVERSITY WILL PROVIDE REGULAR UPDATES ON THE HOME PAGE AT OU.EDU AS INFORMATION BECOMES AVAILABLE.”

7. Press Releases, Public Radio and Television: This component deals with press releases that will be generated from the Office of Public Affairs and/or the President’s Press Secretary.

Appendix H: Useful Contact Numbers

FOR OFFICIAL USE ONLY

Critical Contact Information

<u>Agency</u>	<u>POC</u>	<u>Telephone Number</u>
Norman Police Department	LT JD Younger	(405) 321-1444
Norman Emergency Operations	David Grizzle	(405) 292-9780
Norman Fire Department	James Fullingim	(405) 292-9780, (405) 292-9787 (24hrs.)
Norman Regional Hospital	Eddie Simms Emergency Room	(405) 307-1560 (405) 307-1500
Norman Mayor	Cindy Rosenthal	(405) 366-5402
Norman City Manager	Steve Lewis	(405) 366-5402
OU Medical Center	Joe Ferretti	(405) 271-2332
Cleveland County Sheriff	Joe Lester Undersheriff Rhett Burnett	(405) 366-5716 (405) 366-5716
Oklahoma Highway Patrol	CPT. Trent Pettigrew	(405) 425-2285 (405) 425-2043 (24 hrs)
Oklahoma Military Department	COL Robbie Asher	(405) 228-5200
Oklahoma Civil Emergency Management Duty Officer		(800) 800-2481 (24 hrs)
Governor's Office		(405) 521-2342
Oklahoma City Police Department		(405) 231-2121 911

APPENDIX I: Campus Map



Numerical listing of buildings

1. Boyd House, President's Home
 2. Old Faculty Club
 3. Whitehand Hall
 4. Jacobson Hall, Visitor Center
 5. Monnet Hall
 6. Carnegie Building
 7. Evans Hall
 8. Old Science Hall
 9. Chemistry Building
 10. Reynolds Performing Arts Center
 11. Fred Jones Jr. Art Center
 12. Fred Jones Jr. Museum of Art
 13. Fine Arts Center, Drama
 14. Catlett Music Center
 15. Jacobson House
 16. Elm Avenue Parking Facility
 17. Physical Sciences Center
 18. Burton Hall, Communication
 19. Sutton Hall
 20. Goddard Health Center
 21. E. T. Dunlap Plaza and Clock Tower
 22. Bizzell Memorial Library
 23. Ellison Hall
 24. Jim Thorpe Multicultural Center
 25. Hester Hall
 26. Robertson Hall
 27. Nielsen Hall, Physics
 28. Richards Hall, Zoology
 29. Gittinger Hall, English
 30. Kaufman Hall, Languages
 31. George Lynn Cross Hall, Botany-Microbiology
 32. Noble Electron Microscopy Laboratory
 33. Plant Science Greenhouse
 34. Collings Hall, Education
 35. Gould Hall, Architecture
 36. Copeland Hall, Journalism
 37. Dale Hall
 38. Dale Hall Tower
 39. Gaylord Hall, Journalism
 40. Cate Center
 41. Boren Hall, Honors College
 42. Adams Center
 43. Walker Center
 44. Couch Center
 45. Couch Restaurants
 46. OCCE Commons
 47. OCCE McCarter Hall of Advanced

60. National Weather Center
 61. Partners Place
 62. Stephenson Research Center
 63. Ceramics Department
 64. Archeological Survey
 65. Biological Survey
 66. Counseling Psychology Clinic
 67. Charlie Coe Golf Learning Center
 68. OCCE Office Annex
 69. Bruce Drake Golf Clubhouse
 70. Jimmie Austin University of Oklahoma Golf Course
 71. Kraettli Apartments
 72. Softball Complex/
 73. OCCE Cross Center Main
 74. Cross Center
 75. Sam Viersen Gymnastics Center
 76. L. Dale Mitchell Baseball Park
 77. Traditions Square East
 78. Our Children's World Learning Center
 79. University of Oklahoma Foundation Building
 80. Murray Case Sells Swim Center
 81. Huston Huffman Physical Fitness Center
 82. Observatory and Landscape Department
 83. Henderson-Tolson Cultural Center
 84. Jefferson House
 85. Bud Wilkinson House
 86. Jones House
 87. Wagner Dining Facility
 88. Collums Building
 89. Everest Training Center
 90. Mosier Indoor Athletic Facility
 92. Jacobs Track and Field Facility
 93. Switzer Center
 94. Gaylord Family-Oklahoma Memorial Stadium/Owen Field
 95. Bud Wilkinson Football Practice Facility
 96. Asp Avenue Parking Facility
 97. Armory, Army-Navy ROTC
 98. Adams Hall, Business
 99. Price Hall, Business

Alphabetical listing of buildings

42. Adams Center
 98. Adams Hall, Business
 58. Al Velie Rugby Football Complex
 64. Archeological Survey
 97. Armory, Army-Navy ROTC
 96. Asp Avenue Parking Facility
 65. Biological Survey
 22. Bizzell Memorial Library
 41. Boren Hall, Honors College
 1. Boyd House, President's Home
 69. Bruce Drake Golf Clubhouse
 101. Buchanan Hall, Admissions and Financial Aid
 95. Bud Wilkinson Football Practice Facility
 85. Bud Sells Wilkinson House
 18. Burton Hall, Communication
 6. Carnegie Building
 113. Carpenter Hall
 111. Carson Engineering Center
 40. Cate Center
 14. Catlett Music Center
 63. Ceramics Department
 67. Charlie Coe Golf Learning Center
 9. Chemistry Building
 52. Coats Hall, Law
 34. Collings Hall, Education
 88. Collums Building
 44. Couch Center
 45. Couch Restaurants
 66. Counseling Psychology Clinic
 106. Craddock Hall, Air Force ROTC
 74. Cross Center
 37. Dale Hall Tower
 38. Dale Hall
 21. E. T. Dunlap Plaza & Clock Tower
 23. Ellison Hall
 16. Elm Ave. Parking Facility
 107. Engineering Laboratory
 7. Evans Hall
 89. Everest

Studies
 48. OCCE Administration Building
 49. OCCE Thurman J. White Forum Building
 50. OCCE Sooner Hotel
 51. OCCE Sooner Suites
 52. Coats Hall, Law
 53. Sam Noble Oklahoma Museum of Natural History
 54. Traditions Square West, Opening Fall 2006
 55. Soccer Complex/John Crane Field
 56. Headington Family Tennis Center
 57. Soccer Practice Field
 58. Al Velie Rugby Football Complex
 59. Lloyd Noble Center
 100. McCasland Field House
 5. Monnet Hall
 90. Mosier Indoor Athletic Facility
 80. Murray Case Sells Swim Center
 60. National Weather Center
 27. Nielsen Hall, Physics
 32. Noble Electron Microscopy Laboratory
 102. Nuclear Engineering Lab, Human Resources
 82. Observatory and Landscape Department
 48. OCCE Administration Commons
 46. OCCE Restaurant
 73. OCCE Cross Center Main
 47. OCCE McCarter Hall of Advanced Studies
 68. OCCE Office Annex
 50. OCCE Sooner Hotel
 51. OCCE Sooner Suites
 49. OCCE Thurman J. White Forum Building
 109. Oklahoma Memorial Union
 110. Oklahoma Memorial Union Parking Center
 2. Old Faculty Club
 8. Old Science Hall
 78. Our Children's World Learning Center
 61. Partners Place
 105. Physical Plant Complex
 17. Physical Sciences Center
 33. Plant Science Greenhouse
 47. OCCE McCarter Hall of Advanced

Business
 100. McCasland Field House
 101. Buchanan Hall, Admissions and Financial Aid
 102. Nuclear Engineering Laboratory, Human Resources
 103. Power Plant Office
 104. Rhyne Hall, Social Work
 105. Physical Plant Complex
 106. Craddock Hall, Air Force ROTC
 107. Engineering Laboratory
 108. Felgar Hall, Engineering
 109. Oklahoma Memorial Union
 110. Oklahoma Memorial Union Parking Center
 111. Carson Engineering Center
 112. Sarkeys Energy Center
 113. Carpenter Hall

Training Center
 108. Felgar Hall, Engineering
 13. Fine Arts Center, Drama
 11. Fred Jones Jr. Art Center
 12. Fred Jones Jr. Museum of Art
 94. Gaylord Hall, Family-Oklahoma Memorial Stadium/Owen Field
 39. Gaylord Hall, Journalism
 31. George Lynn Cross Hall, Botany-Microbiology
 29. Gittinger Hall, English
 20. Goddard Health Center
 35. Gould Hall, Architecture
 56. Headington Family Tennis Center
 19. Sutton Hall
 93. Switzer Center
 77. Traditions Square East
 54. Traditions Square West, Opening Fall 2006
 79. University of Oklahoma Foundation Building
 87. Wagner Dining Facility
 43. Walker Center
 3. Whitehand Hall
 103. Power Plant Office
 99. Price Hall, Business
 10. Reynolds Performing Arts Center
 104. Rhyne Hall, Social Work
 28. Richards Hall, Zoology
 26. Robertson Hall
 53. Sam Noble Oklahoma Museum of Natural History
 75. Sam Viersen Gymnastics Center
 112. Sarkeys Energy Center
 55. Soccer Complex/John Crane Field
 57. Soccer Practice Field
 72. Softball Complex/
 Marita Hynes Field
 62. Stephenson Research Center
 19. Sutton Hall
 93. Switzer Center
 77. Traditions Square East
 54. Traditions Square West, Opening Fall 2006
 79. University of Oklahoma Foundation Building
 87. Wagner Dining Facility
 43. Walker Center
 3. Whitehand Hall

Appendix J:

University of Oklahoma Building Information

Building Use Codes:

ACOF - Academic Office
ADOF - Administrative Office
AR - Armory
AS - Assembly
AT - Athletic
CL - Classroom
CP - Computing
DC - Daycare Center
FF - Food Facility
HG - Hangar
HS - Housing
IM - Intramural
L - Leased to outside agency
LB - Laboratory
LBY - Library
LS - Landscaping
MER - Merchandising
MF - Medical Facility
MS - Museum
PF - Parking Facility
RS - Radio Station
SF - Support Facility
SH - Shop
ST - Studio
STOR - Storage
U - Utility

Buildi ng #	Building Name	Bldg. Abbrev.	Address	Building Use	Gross Square Ft.	# of Floors
1	Old Faculty Club	OFC	409 West Boyd Street	ST, CL, ACOF	6,979	3
2	Boyd House	BOYD	407 West Boyd Street	HS	13,039	4
3	Whitehand Hall	WHIT	339 West Boyd Street	ADOF, ACOF	29,689	5
4	Boyd Carriage House	BCAR	407 1/2 West Boyd Street	LS	1,748	2
5	Jones Art Center	FJC	School of Art - 520 Parrington Oval	MS, CL, ACOF	132,675	5
			Museum of Art - 555 Elm Avenue			
6	Carson Engineering Center	CEC	202 West Boyd Street	ACOF, CL, LB	114,548	7
7***	Devon Energy Hall	DEH	110 W. Boyd Street			
8	Sarkeys Energy Center	SEC	100 East Boyd Street	ACOF, CL, LB, LBY	352,795	16
9	Fine Arts Center	FAC	563 Elm Avenue	ACOF, CL, AS	76,501	4
10	Donald W. Reynolds Performing Arts Center	RPAC	560 Parrington Oval	ACOF, CL, AS, ST	78,972	5
11	Jacobson Faculty Hall	JFH	550 Parrington Oval	ADOF	17,289	4
12	Carpenter Hall	CH	840 Asp Avenue	ACOF, CL	21,202	3
13	Felgar Hall	FH	865 Asp Avenue	ACOF, CL, LB	70,215	4
14	Craddock Hall	CRAD	171 Felgar Street	ACOF, CL	16,828	2
15	Stanley B. Catlett Music Center	CMC	500 West Boyd Street	ACOF, AS	140,607	4
17	Elm Avenue Parking Facility	EAPF	544 Elm Avenue	PF	205,959	5
18	Physical Sciences Center	PHSC	601 Elm Avenue	ACOF, CL, LB, LBY	182,963	14
19	Chemistry Building	CHB	620 Parrington Oval	ACOF, CL, LB	39,132	5
19A	Chemistry Building Annex	CHBA	620 Parrington Oval	ACOF, CL, LB	31,440	5
20	Monnet Hall	MH	630 Parrington Oval	ACOF, ADOF, LBY	48,865	7
21	Oklahoma Memorial Union	OMU	900 Asp Avenue	ADOF, AS, FF	188,700	9
21A	Oklahoma Memorial Union Parking Center	UPC	900 Asp Avenue	PF	79,057	5
22	Engineering Lab	EL	200 Felgar Street	ADOF, ACOF, CL, CP	44,160	2
22A	Engineering Lab Storage Shed	ELSS	200 Felgar Street	STOR	248	1
23	Physical Plant Shops	PPS	160-C Felgar Street	ADOF, SH	15,017	1
24	Material Control - Physical Plant	PPMC	160-B Felgar Street	ADOF, SH	9,876	2
25	Physical Plant Office	PP	160 Felgar Street	ADOF	8,414	4
26	Power Plant - New	POW	160-E Felgar Street	U	31,923	2
26A	Power Plant Substation	POWS	160-F Felgar Street	U	740	1
27	Burton Hall	BURT	610 Elm Avenue	ACOF, CL, LBY	30,271	2
28	George Miksch Sutton Hall	SUT	625 Elm Avenue	ACOF, LB, CL	24,830	5
29	Wallace Old Science Hall	SCI	640 Parrington Oval	ADOF, ACOF, AS,	31,016	4
30	Carnegie Building	CARN	650 Parrington Oval	ACOF, CL	18,306	3
31	Nuclear Engineering Laboratory	NEL	905 Asp Avenue	ADOF, ACOF, CP	25,438	3
32	Acetylene Gas Generating Building	ACET	207 Kuhlman Court	SF	363	1
33	Mechanical Engineering Mud Laboratory	MUD	195 Kuhlman Court	LB	900	1
34***	Rawl Engineering Practice Facility	REPF	850 S. Jenkins Ave.			
35	Chilled Water Plant #1	CWP1	160-D Felgar Street	U	13,755	2
38	Goddard Health Center	GHC	620 Elm Avenue	MF	62,153	3
39	Jim Thorpe Multicultural Center	JTMC	700 Elm Avenue	ADOF	12,395	4
40	Evans Hall	EH	660 Parrington Oval	ADOF	50,659	5
41	Buchanan Hall	BH	1000 Asp Avenue	ADOF	35,216	3
42	Aero-Propulsion Lab	APL	205 Kuhlman Court	LB	1,288	2
43	Telecom Maintenance Building	TCM	175 Kuhlman Court	ADOF, STOR	10,092	2
45	Power Plant Office	PPOF	1000 South Jenkins Avenue	ADOF	2,357	2
46	Ellison Hall	ELLH	633 Elm Avenue	ACOF	23,715	4

48	720 Elm (Phi Kappa Psi)	PKP	720 Elm Avenue	HS	19,375	4
49	Bizzell Library	BL	401 West Brooks Street	LBY	74,759	7
49A	Bizzell Library - 1st Addition	BL1	401 West Brooks Street	LBY	152,264	6
49B	Neustadt Wing, Bizzell Library	NM-B	401 West Brooks Street	LBY	153,163	8
50	Adams Hall	AH	307 West Brooks Street	ACOF, CL	78,703	5
50A	Michael F. Price Hall	MFPH	1003 Asp Avenue	CL, ACOF	64,728	4
51***	Wagner Student Academic Services Center	WASC	1005 Asp Avenue			
52	Howard McCasland Field House	FIH	151 West Brooks Street	AT	53,770	3
53	Rhyne Hall	RHYN	1005 South Jenkins Avenue	ACOF, CL	16,238	4
54	Plant Science Greenhouse #2	PSG2	1144 Asp Avenue	LB	1,654	1
55	Brooks House	BRKS	216 East Brooks Street	STOR	2,422	2
55A	Brooks House Storage Shed	BRHS	216 East Brooks Street	STOR	198	1
56	Hester Hall	HEST	729 Elm Avenue	ADOF, ACOF, CL, MER	36,253	3
56A	Robertson Hall	ROBT	731 Elm Avenue	ADOF	21,414	3
57	Nielsen Hall	NH	440 West Brooks Street	ACOF, LB, CL	93,188	5
58	Richards Hall	RH	730 Van Vleet Oval	ACOF, LB, CL	48,580	5
58A	Richards Hall Addition	RHA	730 Van Vleet Oval	ACOF, LB, CL	20,177	5
59	Armory	ARM	290 West Brooks Street	ACOF, CL, AR	39,724	2
60	Duck Pond Storage Building	DPSE	601 East Lindsey Street	STOR	124	1
61	Gittinger Hall	GIH	760 Van Vleet Oval	ACOF, CL	32,696	4
62	George Lynn Cross Hall	GLCH	770 Van Vleet Oval	ACOF, LB, CL, LBY	95,482	11
63	Animal House	ANIM	1060 Asp Avenue	LB	4,394	2
63A	Animal Holding Facility	AHF	1060 Asp Avenue	LB	2,550	1
63B	Noble Microscopy Laboratory	NML	1060 Asp Avenue	LB	5,146	1
64	Insectary	INSC	1080 Asp Avenue	LB	3,014	1
65	Plant Science Greenhouse #1	PSG1	1140 Asp Avenue	LB	11,129	2
66	The Gaylord Family-Oklahoma Memorial Stadium	OMS	180 West Brooks Street	AT, ADOF	591,945	11
66A	Barry Switzer Center	BSC	180 West Brooks Street	AT, ADOF	77,101	3
67	Kaufman Hall	KH	780 Van Vleet Oval	ACOF, CL, RS	38,029	3
68	Ellsworth Collings Hall	ECH	820 Van Vleet Oval	ACOF, CL	36,163	4
69	Gould Hall	GH	830 Van Vleet Oval	ACOF, CL, LBY	83,543	6
70	Copeland Hall	COH	860 Van Vleet Oval	ACOF, CL	42,537	4
71	Dale Hall Tower	DAHT	455 West Lindsey Street	ACOF, CL	71,193	11
72	Dale Hall Classroom Building	DAH	433 West Lindsey Street	CL, ACOF, LB	82,722	3
73	Asp Avenue Parking Facility	AAPF	1185 Asp Avenue	PF, MER	310,587	7
74	Gaylord Hall	GLRD	395 W. Lindsey St.	CL, ACOF, LBY	61,085	3
75	Gomer T. Jones Dormitory	GTJD	1207 South Jenkins Avenue	HS	26,029	5
76	Jefferson Dining Hall	JDH	1231 South Jenkins Avenue	FF	10,950	2
77	Jefferson House Dormitory	JEFF	1251 South Jenkins Avenue	HS	19,560	4
78	Collums Building	COLM	201 East Lindsey Street	ADOF, SF	24,903	2
79	Landscape & Grounds Maintenance Facility (formerly the Lindsey Street Fire Station)		401 East Lindsey Street (73069)	L	4,100	1
80	Charles Bud Wilkinson Dormitory	BWD	1225 South Jenkins Avenue	HS	25,238	4
81	Mosier Indoor Athletic Facility	MIAF	395 East Lindsey Street	AT	54,000	1
81A	Everest Training Center	ETC	385 East Lindsey Street	AT	98,000	1
82	Cate Center Dormitory #2	CCD2		HS	35,560	5
	Holman House		316 Cate Center Drive			
	Hume House		318 Cate Center Drive			
	Jordan House		320 Cate Center Drive			
	Kirk House		322 Cate Center Drive			
83	Cate Center Dormitory #1	CCD1		HS	35,560	5

	Davis House		308 Cate Center Drive			
	Forbes House		310 Cate Center Drive			
	Hammill House		312 Cate Center Drive			
	Herrick House		314 Cate Center Drive			
86	Cate Center Dining Hall	CCDH	331 Cate Center Drive	FF	25,940	2
86A	Cate Dining Hall Dry Storage Bldg.	CDS	331 Cate Center Drive	STOR	244	1
87	David L. Boren Hall	DLBH	1300 Asp Avenue	HS, ADOF, CL	57,090	6
	Bizzell House		1300 Asp Avenue			
	Brooks House		1300 Asp Avenue			
	Cleo Cross House		1300 Asp Avenue			
	Evans House		1300 Asp Avenue			
90	Cate Center Dormitory #3	CCD3		HS	35,560	5
	Lawson House		324 Cate Center Drive			
	McCurtain House		326 Cate Center Drive			
	McSpadden House		328 Cate Center Drive			
	Neill House		330 Cate Center Drive			
91	Cate Center Dormitory #4	CCD4		HS	35,560	5
	Oliver House		332 Cate Center Drive			
	Parker House		334 Cate Center Drive			
	Sager House		336 Cate Center Drive			
	Sanger House		338 Cate Center Drive			
92	Henderson-Tolson Cultural Center	HTCC	1335 Asp Avenue	ADOF, AS	8,228	2
93	Landscape and Grounds Building	LSGR	1341 Asp Avenue	ADOF	9,833	3
95	Cate Center Laundry	CCL	325 West First Street	SF	1,475	1
99	Adams Center Dormitory	AC		HS	238,938	14
	Johnson Tower		348 West First Street			
	McCasland Tower		346 West First Street			
	Muldrow Tower		342 West First Street			
	Tarman Tower		340 West First Street			
100	Walker Center Dormitory	WC	1400 Asp Avenue	HS	329,768	15
	Housing & Food Services Offices		1406 Asp Avenue			
103	Huston Huffman Center	HHC	1401 Asp Avenue	AT	144,480	2
106	Men's Intramural Building	MIB	300 East Stinson Street	STOR	416	1
106A	Intramural Building #2	IB2	300 East Stinson Street	STOR	960	1
106B	Intramural Building #3	IB3	300 East Stinson Street	STOR	288	1
107	Couch Center Cafeteria	CCAF	309 West Third Street	FF	50,211	3
108	Couch Center Dormitory	CDRM	1524 Asp Avenue	HS	328,883	15
113	CCE Cottage 421/422	C421	1775 Maple Avenue	HS	1,778	1
114	CCE Cottage 419/420	C419	1775 Maple Avenue	HS	1,778	1
115	Chilled Water Plant #2	CWP2	300 West Fourth Street	U	10,763	2
116	Cross Center Building A	CRSA		DC, ACOF	37,289	5
	Alley House		100 Fourth Street (73019)			
	Baker House		104 Fourth Street (73019)			
	Bass House		108 Fourth Street (73019)			
	Buchanan House		112 Fourth Street (73019)			
119	CCE Cottage 417/418	C417	1775 Maple Avenue	HS	1,778	1
120	CCE Cottage 415/416	C415	1775 Maple Avenue	HS	1,778	1
121	CCE Commons Cafeteria	COMC	1620 Asp Avenue	FF	25,252	4
122	McCarter Hall of Advanced Studies	HAS	1610 Asp Avenue	ACOF	17,608	7
123	Cross Center Building B	CRSB		ADOF	37,289	5
	Burton House		1619 Cross Center Drive			

	Ditmars House		1623 Cross Center Drive			
	Kelly House		1627 Cross Center Drive			
	Kitchens House		1631 Cross Center Drive			
124	Cross Center Main Building	CRSM	1600 South Jenkins Avenue	ADOF, CL	25,323	2
125	CCE Cottage 413/414	C413	1775 Maple Avenue	HS	1,778	1
126	CCE Cottage 409/410	C409	1775 Maple Avenue	HS	1,778	1
127	CCE Cottage 407/408	C407	1775 Maple Avenue	HS	1,778	1
128	Thurman J. White Forum Building	FORM	1704 Asp Avenue	AS, ADOF	70,476	3
129	CCE Administration Building	ADMN	1700 Asp Avenue	ADOF, ACOF	26,246	3
130	Cross Center Building C	CRSC		HS	37,289	5
	McCain House		1639 Cross Center Drive			
	Mills House		1643 Cross Center Drive			
	Naifeh House		1647 Cross Center Drive			
	Prentice House		1651 Cross Center Drive			
131	Cross Center Building D	CRSD		ADOF, CL	37,289	5
	Setliff House		1652 Cross Center Drive			
	Smith House		1656 Cross Center Drive			
	Vance House		1660 Cross Center Drive			
	Young House		1666 Cross Center Drive			
133	CCE Cottage 405/406	C405	1775 Maple Avenue	HS	1,778	1
134	CCE Cottage 403/404	C403	1775 Maple Avenue	HS	1,778	1
135	CCE Cottage 401/402	C401	1775 Maple Avenue	HS	1,778	1
136	CCE Sooner House (Hotel)	SNRH	300 Kellogg Drive	HS	38,543	4
137	Murray Case Sells Swim Center	POOL	1701 Asp Avenue	AT	20,262	1
137A	Swim Center Pump House		1701 Asp Avenue	AT	?	1
160	Interconnect Substation	SUB	450 East Brooks Street	U	333	1
200	Andrew M. Coats Hall	LAW	300 West Timberdell Road	ACOF, CL, LBY	176,039	4
201	104 Kraettli Apartments	K104	West Constitution - individually numbered	HS	91,447	2
201A	312 Kraettli Apartments	K312	Wadsack - individually numbered	HS	260,040	2
	Kraettli Office		212-A Wadsack			
	Kraettli Laundry		207 1/2 Wadsack			
202	Bruce Drake Golf Clubhouse	BDGC	1 Par Drive	ADOF, MER, FF	12,735	3
203	Women's Softball Facility	WSBF	2500 South Jenkins Avenue	AT	7,500	2
204	S.C. Building 204 - OU Foundation	OUFN	100 West Timberdell Road	ADOF	12,633	1
205	Sam Noble Oklahoma Museum of Natural History	OMNH	2401 South Chautauqua Ave.	ADOF, ACOF, MS, LB, CL	198,634	6
206	Kraettli Faculty-In-Residence	KFIR	400 Wadsack Drive	HS	2,301	1
207	Our Children's World Learning Center	CWLC	2727 Asp Avenue	DC	8,459	1
208	OU Traditions Square - East	OTSE	2500 Asp Avenue - 73072	HS	233,622	3
209	S.C. Building 004	S4	555 East Constitution Street	ADOF	40,713	2
210	L. Dale Mitchell Baseball Park	LDMB	401 West Imhoff Road	AT	10,000	2
211	Sam Viersen Gymnastics Center	VGC	325 West Imhoff Road	AT	17,105	1
213	S.C. Building 006	S6	2709 Lawrence Avenue	ACOF, CL	17,312	2
214	OU Traditions Square - West	OTSW	2730 S. Chautauqua Ave. 73072	HS	233,622	3
220	Charlie Coe Golf Learning Center	CGLC	4 Par Drive	AT	7,026	1
222	Golf Course Maintenance Building	GCMB	601 East Constitution Street	SF	6,036	1
222A	Golf Course Chemical Building	GCCB	601 East Constitution Street	SF	912	1
222C	Golf Course Irrigation Pump House	GCPH	1 1/2 Par Drive	SF	567	1
226	Fears Structural Engineering Laboratory	FL	303 East Chesapeake Street	LB	13,944	1
226A	Fears Environmental Chamber	FEC	303 East Chesapeake Street	LB	198	1
227	S.C. Building 139	S139	2725 South Jenkins Avenue	SH	21,332	2

228	S.C. Building 134	S134	111 East Chesapeake Street	ACOF, SH	35,844	2
231	S.C. Building 035	S35	2720 Monitor Avenue	ADOF	40,413	1
231A	S.C. Building 035A	S35A	2720 Monitor Avenue	ADOF	780	1
235	Joseph K. Lester Police Headquarters	OUPD	2775 Monitor Avenue	ADOF	13,498	1
236	Ceramics Studio and Kiln Facility	CSKF	401 East Congress Street	ACOF, CL, ST	4,973	2
237** *	Transportation Operations Center	TOC	510 East Chesapeake Street (73019)			
238	528 Chesapeake Street	528C	528 Chesapeake Street		6,000	1
242	S.C. Landscape Building	SCLB	2896 Decatur Avenue	LS	2,400	1
243	OU Greenhouse Facility	OUGH	2898 Decatur Avenue	LS	10,450	1
246	OU Tennis Center and Soccer Facility	TCSF	2915 Chautauqua Avenue	AT	14,983	
247	Lloyd Noble Center	LNC	2900 South Jenkins Avenue	AT, ADOF	264,321	4
248	S.C. Building 087	S87	2805 South Jenkins Avenue	ADOF, SH	54,166	2
249	S.C. Building 133	S133	2802 Lawrence Avenue	VACANT	233	1
265	S.C. Building 130	S130	2901 Lawrence Avenue	STOR	380	1
266	S.C. Building 130A	130A	2901 Lawrence Avenue	STOR	87	1
267	S.C. Building 178	S178	2901 Lawrence Avenue	STOR	803	1
268	South Campus Utility Plant	SCUP	410 East Congress Street	U	8,420	1
271	S.C. Building 106	S106	520 Congress Street (West); 524 East Congress (East)	L	12,469	1
273	S.C. Building 108	S108	2921 Monitor Avenue	STOR	34,237	1
274	S.C. Building 109	S109	530 East Congress Street	ADOF, SH	12,839	1
276	S.C. Building 111	S111	2927 Monitor Avenue	ADOF, STOR	12,300	1
279	S.C. Building 113	S113	517 East Columbus Street	L	12,373	1
281	S.C. Building 116	S116	2928 South Dewey Avenue	LS	6,516	1
282	S.C. Building 117	S117	2928 South Dewey Avenue	ADOF	768	1
291	Stephenson Research and Technology Center	SRTC	101 David L. Boren Boulevard	LB, ACOF	93,465	2
292	National Weather Center	NWC	120 David L. Boren Boulevard (73072)		256,725	9
293	One Partners Place	1PP	350 David L. Boren Boulevard (73072)		51,500	
294	Oklahoma Fishery Research Laboratory	FISH	500 East Constellation Street	LB	9,160	1
295	Two Partners Place	2PP	3100 Monitor Avenue (73072)		56,607	
296** *	Three Partners Place	3PP	201 David L. Boren Boulevard (73072)			
302	OK Army Reserve - NOT AN OU BUILDING		2232 Goddard			
303	N.C. Building 1200	1200	2320 Newton Drive	L	15,456	1
304	T-Hangar 304	T304	2200 Goddard Avenue	HG	9,632	1
305	T-Hangar 305	T305	2150 Goddard Avenue	HG	11,322	1
306	T-Hangar 306	T306	2110 Goddard Avenue	HG	11,371	1
307	N.C. Building 307	N307	1600 Westheimer Drive	L	14,000	1
310	T-Hangar #4	TH4	1908 Goddard Avenue	HG	20,400	1
311	N.C. Building 212	N212	1948 Goddard Avenue	L	14,356	1
312	N.C. Building 406	N406	2121 Goddard Avenue	STOR	9,000	1
314	N.C. Building 210	N210	1928 Goddard Avenue	ACOF, CL, LB, HG	35,094	4
315	N.C. Building 211	N211	1928 Goddard Avenue	LB	2,969	1
316	Hangar 5 Inc., #A-2	TH5I	2234 Goddard Avenue	HG	3,154	1
318	N.C. Building 318	N318	1932 Goddard Avenue	LB	6,000	1
322	N.C. Building 702	N702	1110 Einstein Street	LB	10,903	1
323	N.C. Building 702A	702A	1110 Einstein Street	SF	398	1
324	N.C. Building 324	N324	1101 Lexington Avenue	ACOF, LB	11,102	2
330	N.C. Building 214	N214	1950 Goddard Avenue		14,840	1
333	N.C. Building 105	N105	1620 Westheimer Drive	HG	20,910	1
334	N.C. Building 102	N102	1702 Lexington Avenue	L-HG	191	1

335	N.C. Building 101	N101	1700 Lexington Avenue	ADOF, FF	16,867	5
336	N.C. Building 104	N104	1630 Westheimer Drive	HG	10,667	1
340	N.C. Building 601	N601	1734 Halley Avenue	ST, STOR	21,901	2
341	N.C. Building 1005	1005	1108 Newton Drive	IM	47,600	2
349	N.C. Building 504	N504	1434 Wright Place	STOR	6,145	2
350	N.C. Building 505	N505	1420 Wright Place	STOR	2,245	1
355	N.C. Building 800	N800	1235 Westheimer Drive	STOR	3,700	1
356	NEXRAD II - NOT AN OU BUILDING		1215 Westheimer Drive			
360	N.C. Building 611	N611	1610 Newton Drive	ADOF, CP	19,994	1
363	N.C. Building 600	N600	1313 Halley Circle	ADOF, LB	24,078	2
364	Phased Array Building - NOT AN OU BUILDING					
366	N.C. Building 366	N366	1424 Halley Avenue	ADOF	12,671	1
367	88D Building - NOT AN OU BUILDING		1426 Halley Avenue			
368	TB2/TB3		1317 Halley Circle		4,360	
400	Logan Apartments	LAPT	720 West Boyd Street	VACANT	15,471	2
401	701 West Brooks Street		701 West Brooks Street Norman, OK 73069			
407	719 Chautauqua		719 Chautauqua	HS	1,825	1
410	Journalism Press Warehouse	JRWR	112 West Apache Street	STOR	3,078	1
413	Oscar Jacobson House	OJH	609 South Chautauqua Avenue	ADOF, MER	2,684	1
414	128 E. Page	128P	128 E. Page Street	LB, ACOF	1,461	2
416	730 College (Sigma Alpha Epsilon)	730C	730 South College Avenue	HS	31,278	3
417	Parkway South	PWYS	3200 Marshall Avenue	ACOF, L	42,639	2
418	115/117 Farmer Street		115/117 Farmer Street	HS	1,504	
419	1303/1305/1307/1309/1311/1313 Jenkins Avenue		1303/1305/1307/1309/1311/1313 Jenkins Avenue			
419A	1301 Jenkins Avenue/103/108 East Lindsey Street		1301 Jenkins Avenue/103/108 East Lindsey Street			
419B	120 East Lindsey Street		120 East Lindsey Street			
420	1405 Jenkins Avenue			HS	1,530	
420A	1405 1/2 and 1407 1/2 Jenkins Avenue			HS		
420B	1407 Jenkins Avenue			HS	1,945	
420C	1411/1413 Jenkins Avenue			HS	1,551	
420D	1425 Jenkins Avenue			HS	1,244	
420E	1427 Jenkins Avenue			HS	1,252	
420F	1429 Jenkins Avenue			HS	1,105	
421	1404 Lincoln Avenue			HS	1,978	
421A	1406/1408 Lincoln Avenue			HS	1,440	
421B	1324 Lincoln Avenue			HS		
421C	1410 Lincoln Avenue			HS		
421D	1418 Lincoln Avenue			HS		
421E	1412-1414 Lincoln Avenue			HS		
421F	1420 Lincoln Avenue			HS		
421G	1420 1/2 Lincoln Avenue			HS		
422	1701 Jenkins Avenue			HS	1,710	
423	1130 Trout			HS	1,104	
424	1425 George St.	1425	1425 George St.	CL, LB, SH	8,910	2
425	131 Page Street			HS	1,700	
426	135 Page Street			HS	818	
427	139 Page Street			HS	1,076	
428	1124 Trout Avenue			HS	1,068	
431	1331 1/2 - 1333 1/2 S. Jenkins		1331 1/2 - 1333 1/2 S. Jenkins	HS	1,379	1

443	Newman Hall	NEWH	707 West Boyd Street	STOR	16,793	4
445	Press Book Distribution Center	PBDC	4100 29th Avenue, NW	ADOF, STOR	21,933	2
446	Book Distribution Center 2	BDC2	2800 Venture Drive	ADOF, STOR	20,000	1
447	2750 Venture Drive	2750	2750 Venture Drive	L	17,000	1
448	2020 Industrial Boulevard		2020 Industrial Boulevard	STOR, ACOF	192,750	2
449	2185 Industrial Boulevard		2185 Industrial Boulevard	ACOF	3,000	1
450	KGOU Transmitter Building	KGOU	5700 East Indian Hills Road	RS	178	1
451	KROU Transmitter Building	KROU	11901 N. Eastern Avenue	RS	120	1
600	Research Lab #1 - Texoma		Texoma Biological Station	LB, OF	4,652	1
602	Laboratory B - Texoma		Texoma Biological Station	LB	4,794	2
603	Library - Texoma		Texoma Biological Station	LBY	4,071	1
604	Filtration Plant - Texoma		Texoma Biological Station	U	322	1
605	Laboratory A - Texoma		Texoma Biological Station	LB	2,133	1
607	Main Building - Texoma		Texoma Biological Station	HS, FF	16,473	2
608	Pump House - Texoma		Texoma Biological Station	U	108	1
609	Texoma Laundry Building		Texoma Biological Station	SF	188	1
610	Dormitory A - Texoma		Texoma Biological Station	HS	3,015	2
611	Dormitory B - Texoma		Texoma Biological Station	HS	3,682	2
612	Dormitory C - Texoma		Texoma Biological Station	HS	3,710	2
613	Boat House #1 - Texoma		Texoma Biological Station	PF	1,400	1
615	Boat House #3 - Texoma		Texoma Biological Station	PF, LB	2,000	1
616	Texoma Research Shop		Texoma Biological Station	LB, OF	2,503	1
617	Texoma Greenhouse		Texoma Biological Station	LB	2,235	1
618	Apartments - Texoma		Texoma Biological Station	HS	2,800	1
700	University Village Apartments (HSC)		900 N. Stonewall OKC, OK 73117	HS	71,940	2
703	Okla Geophysical Observatory		Leonard, OK	LB	2,968	1
704	OGS Magnetic Variation Bldg.		Leonard, OK	LB	261	1
706	Magnetic Absolute Building	MAB	Leonard, OK	LB	64	1
707	Oil Well Blow-Out Prevention	OBOP	Noble, OK	LB	800	1
708	Great Plains Apiaries	GPA	McClain County	HS (living trust)	1,600	1

* *Building currently (or in near future) undergoing expansion*

** *Building recently expanded - square footages approximate*

*** *New building under construction - square footage unavailable at this time*